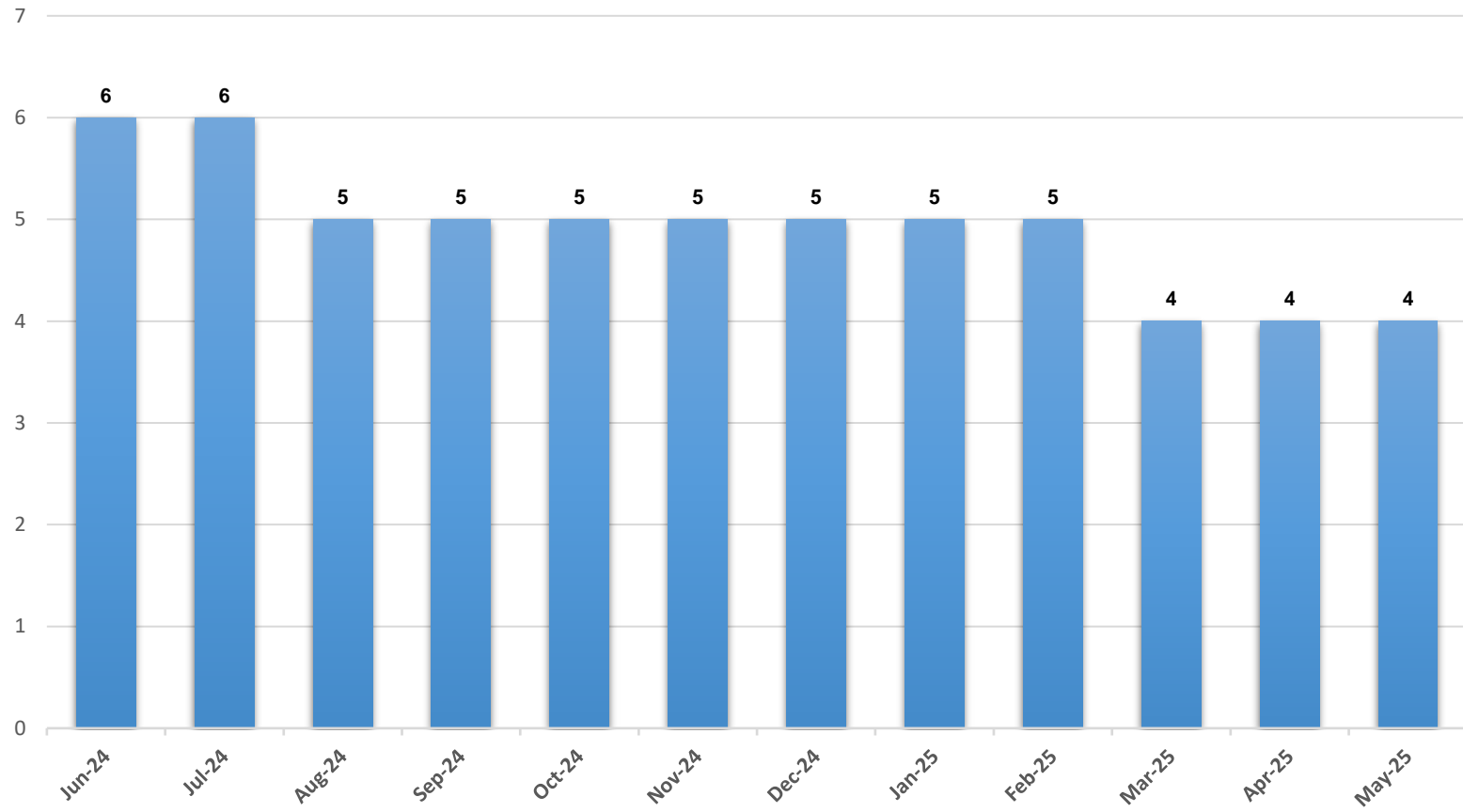
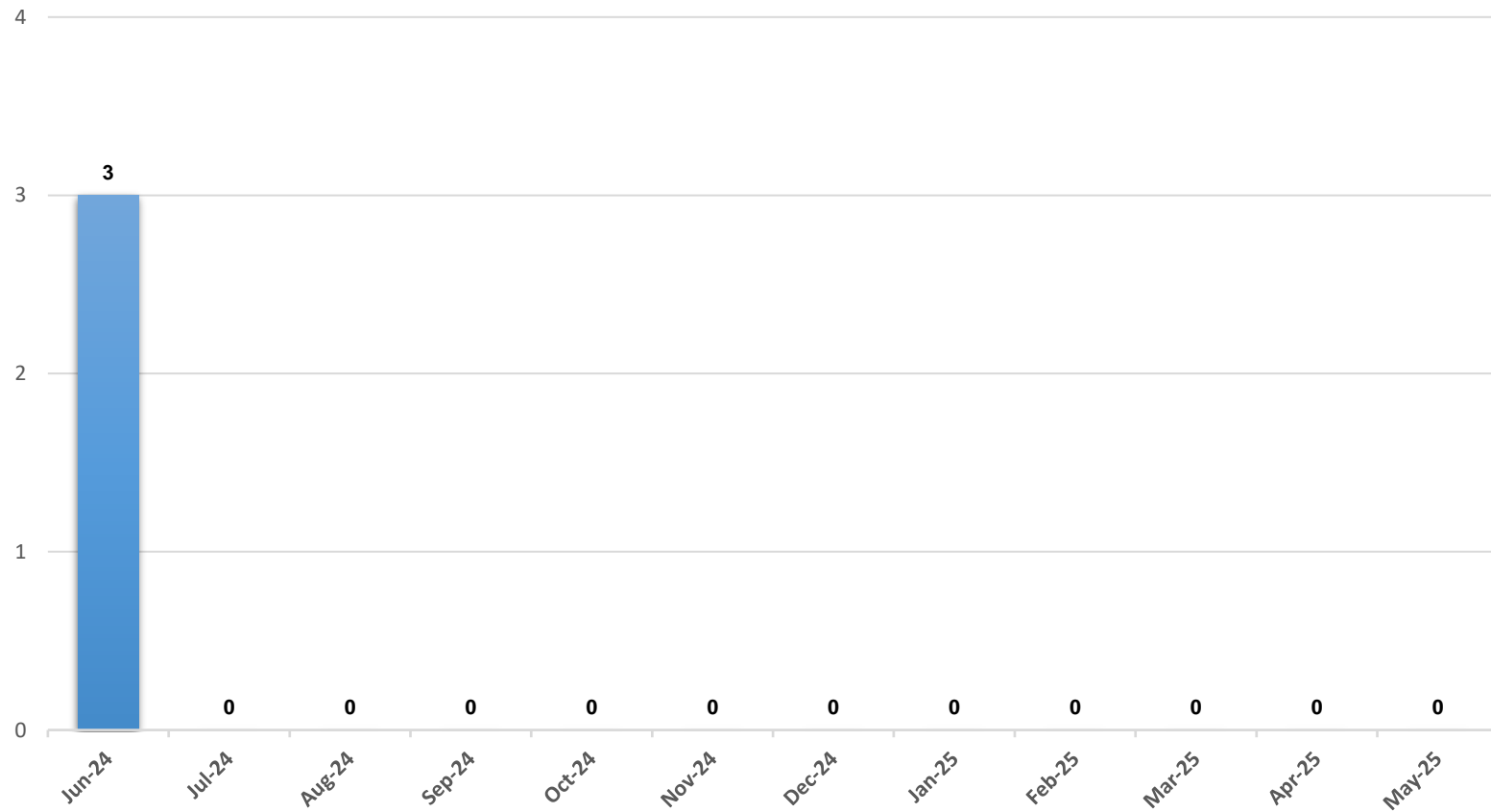


Children in Foster Care, Lafayette



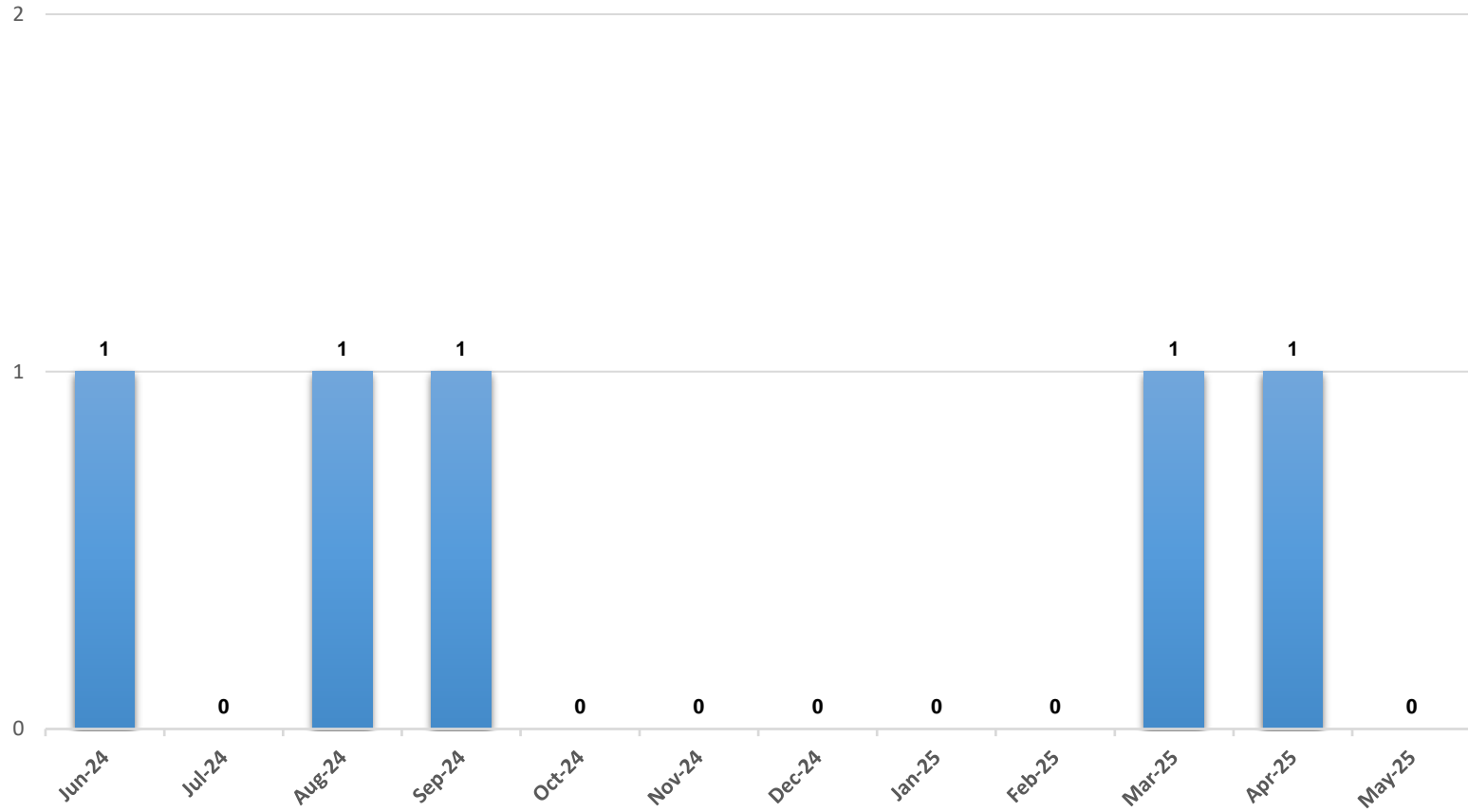
***The chart above represents the number of children in foster care at the end of the month.**

Entries into Foster Care During the Month, Lafayette



*The chart above represents the number of entries into foster care during the month.

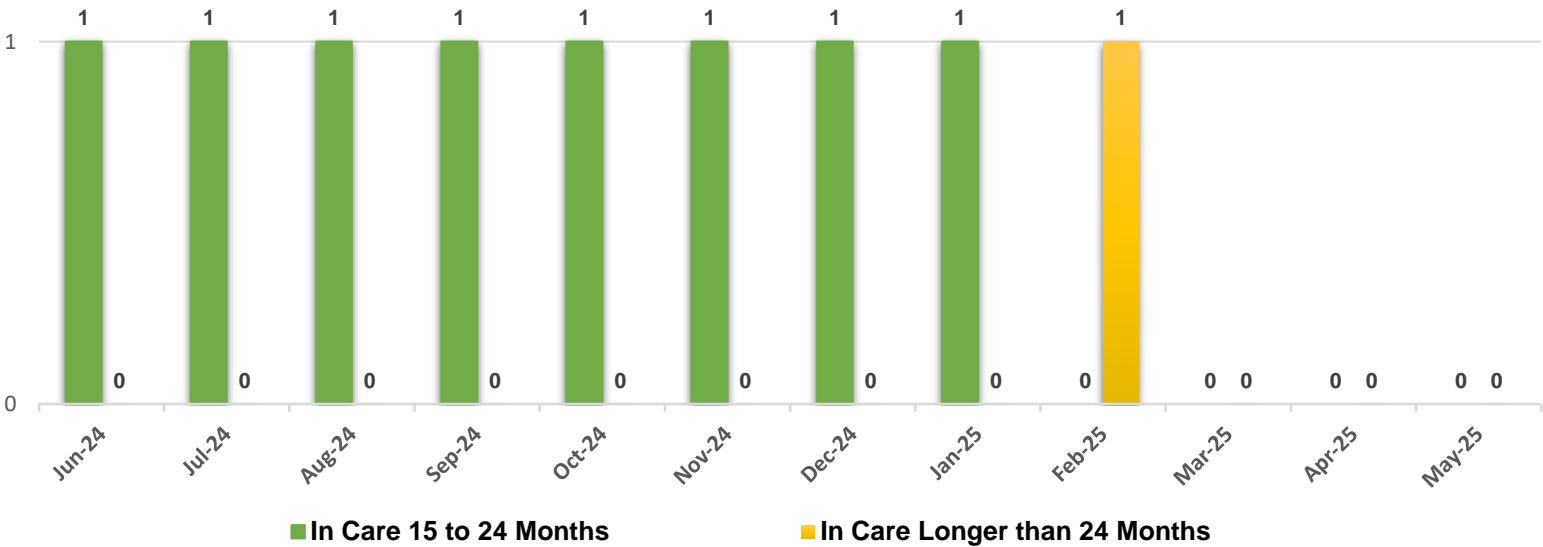
Discharges from Foster Care During the Month, Lafayette



*The chart above represents the number of discharges from foster care during the month.

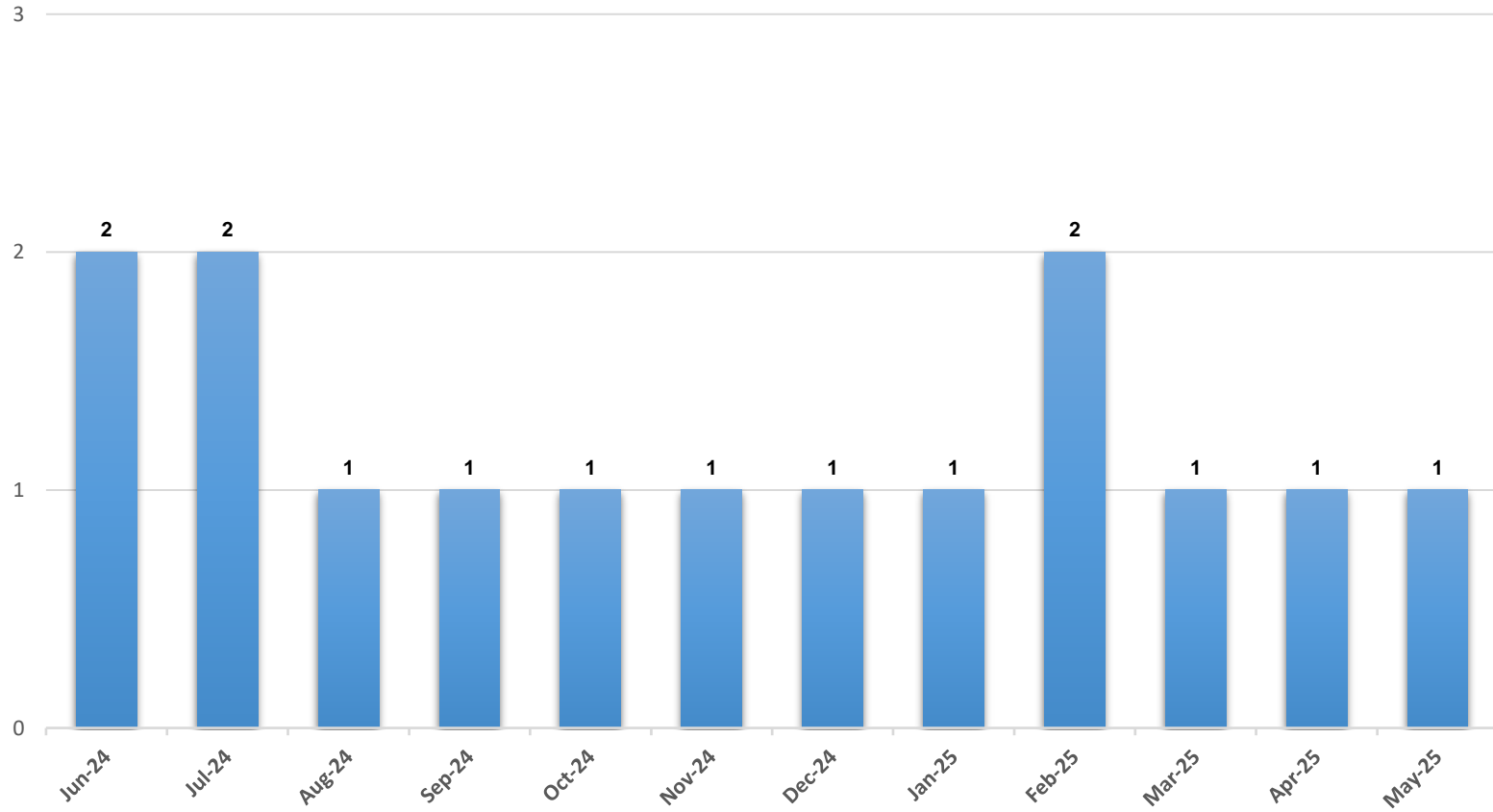
Children with a Goal of Reunification, Lafayette

2



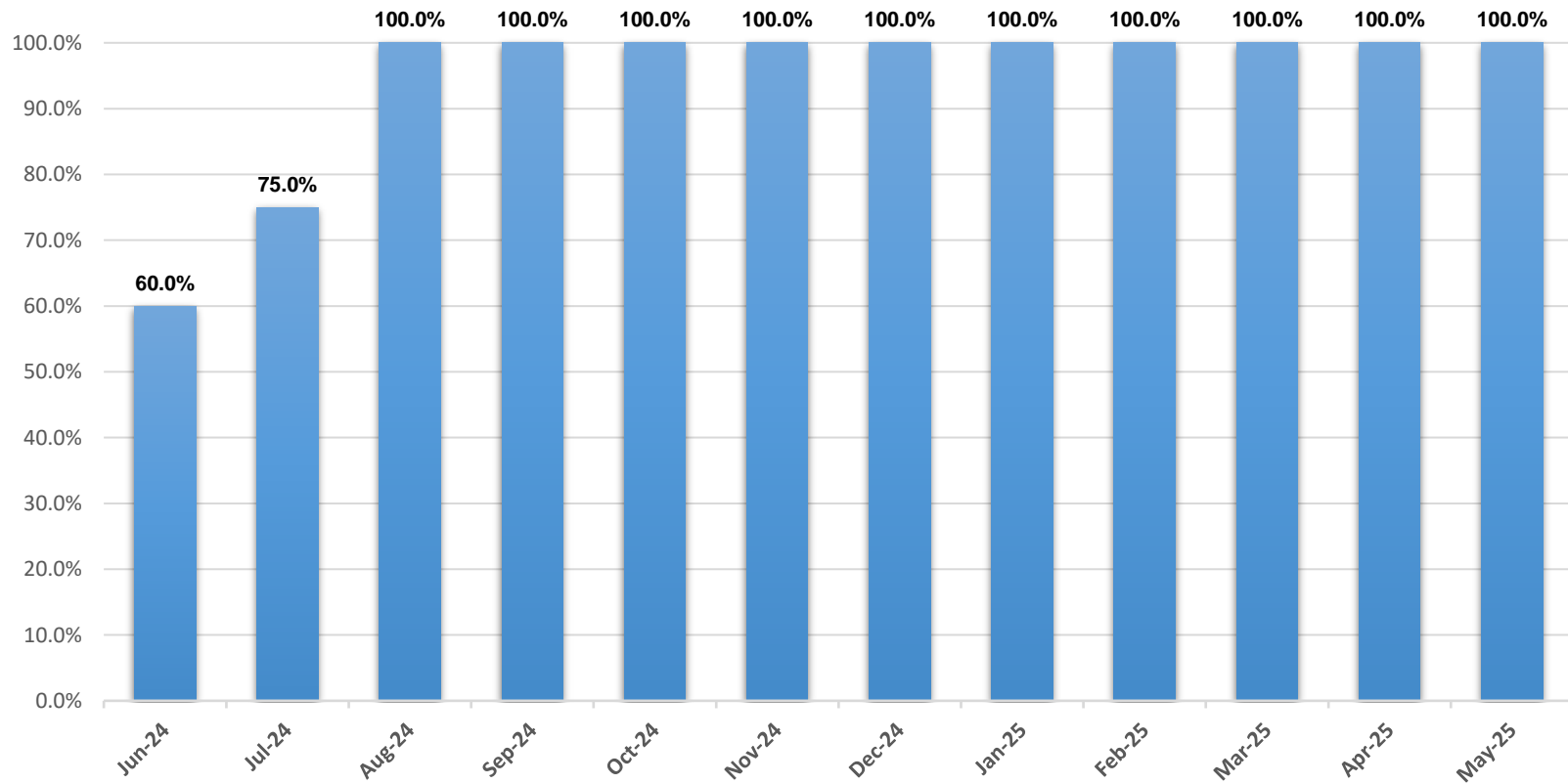
*The chart above represents the number of children with a goal of reunification at the end of each month.

Children in Foster Care 24 Months or Longer, Lafayette



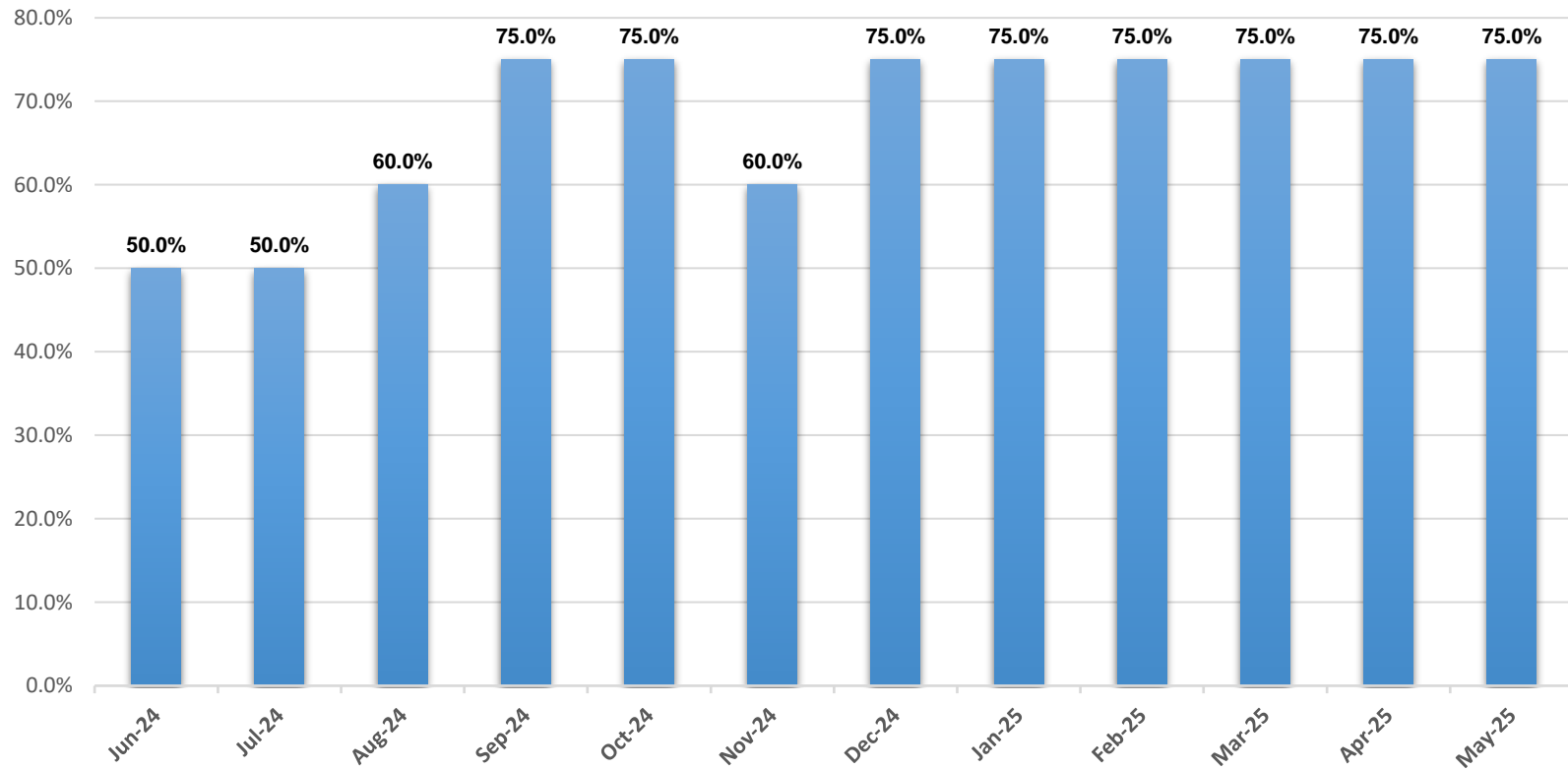
***The chart above represents the number of children who have resided in foster care for 24 consecutive months or longer at the end of the month.**

Children Entering Care whose First Placement is with Relative, Lafayette



***The chart above represents the percentage of entries into care for the 12-month period concluding at the end of each month in which the child's first placement was with a relative or fictive kin.**

Children Placed with Relatives, Lafayette



***The chart above represents the percentage of children residing with relatives at the end of each month.**

****Children are considered to be residing with relatives if they are placed in a provisional relative or provisional fictive kin home, relative or fictive kin foster home, relative pre-adoptive home, ICPC home, or temporary family placement.***