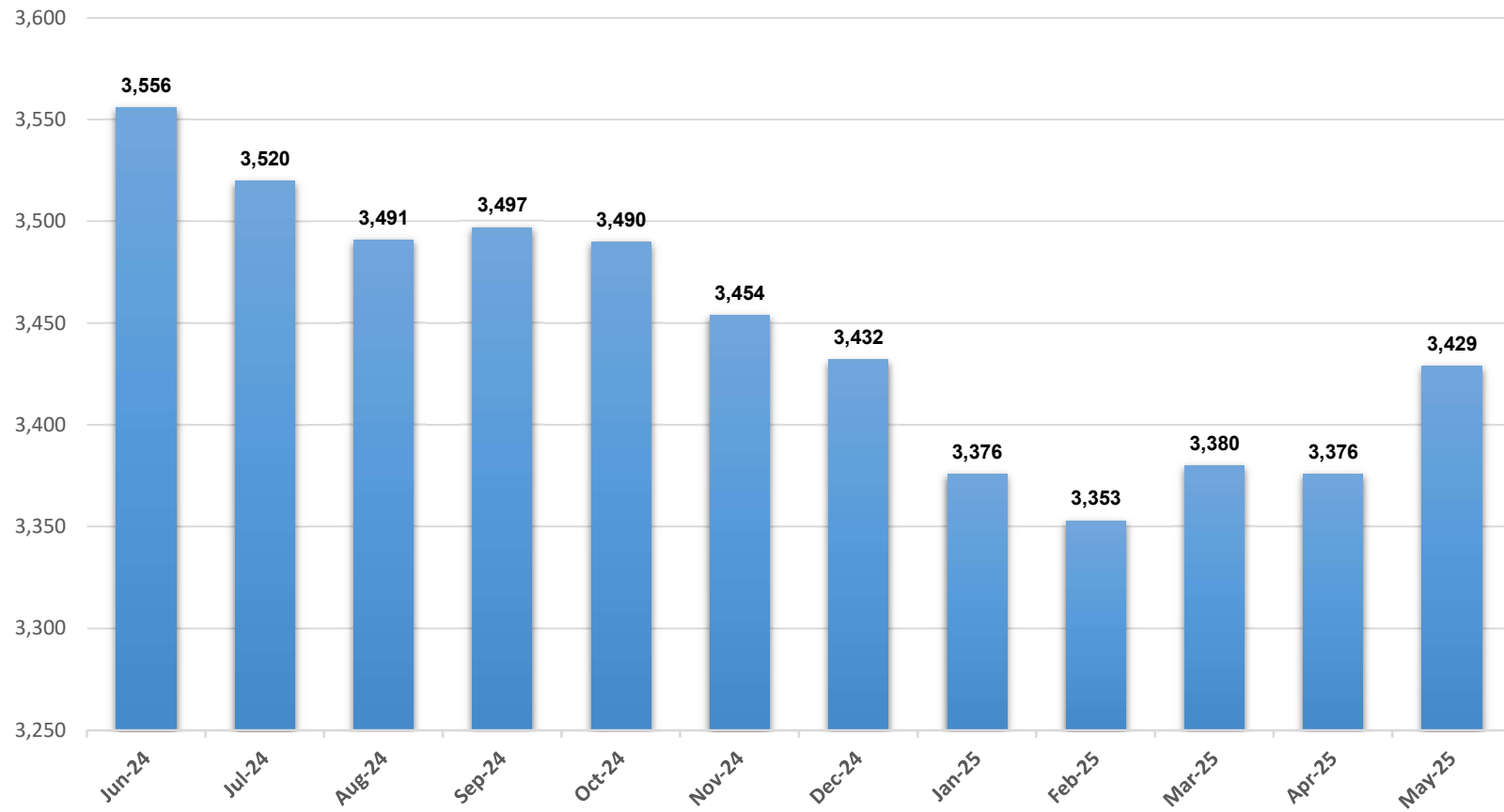


EVERY DAY COUNTS

MAY 2025

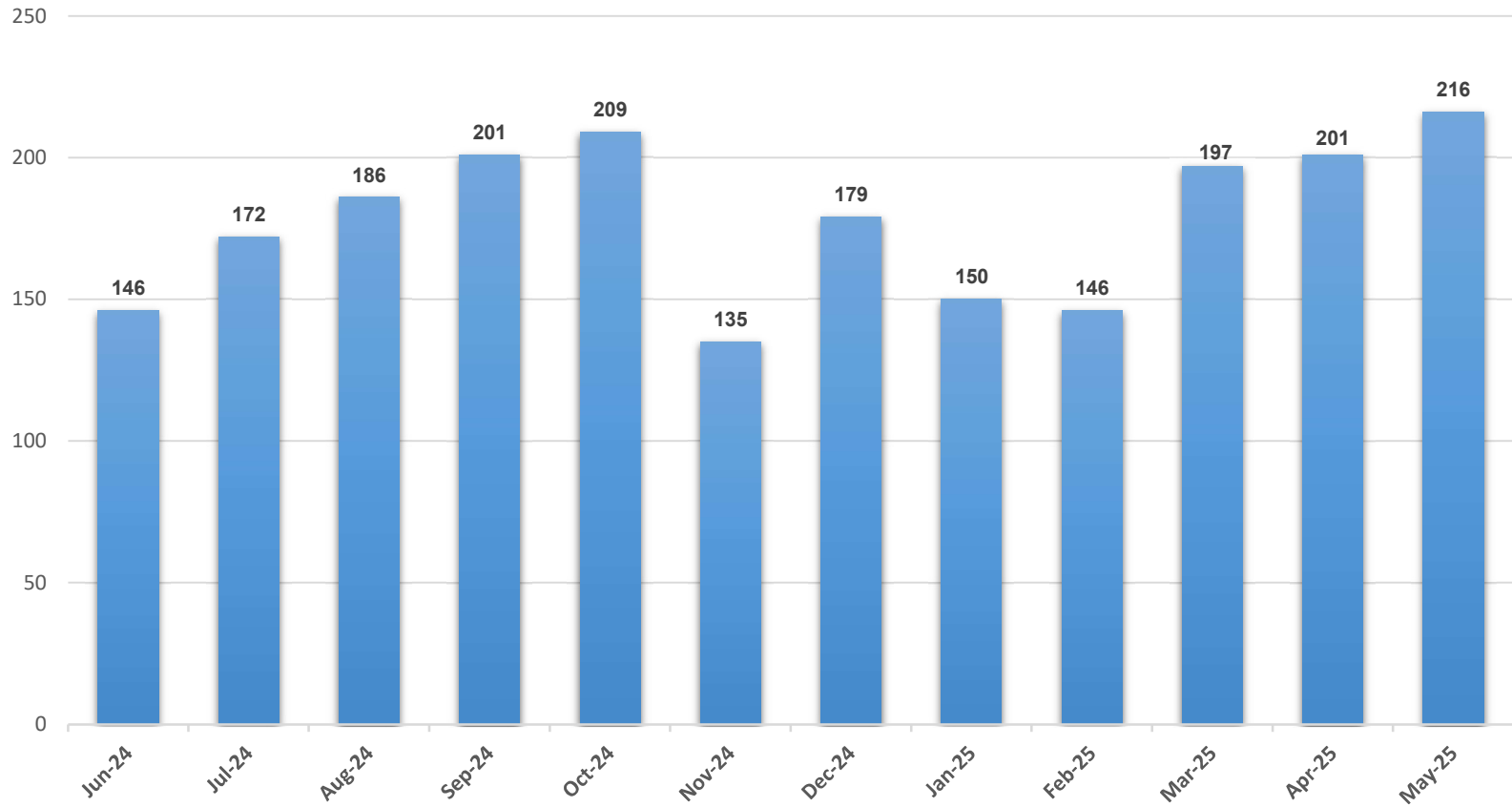
Arkansas Department of Human Services
Division of Children and Family Services

Children in Foster Care, Statewide



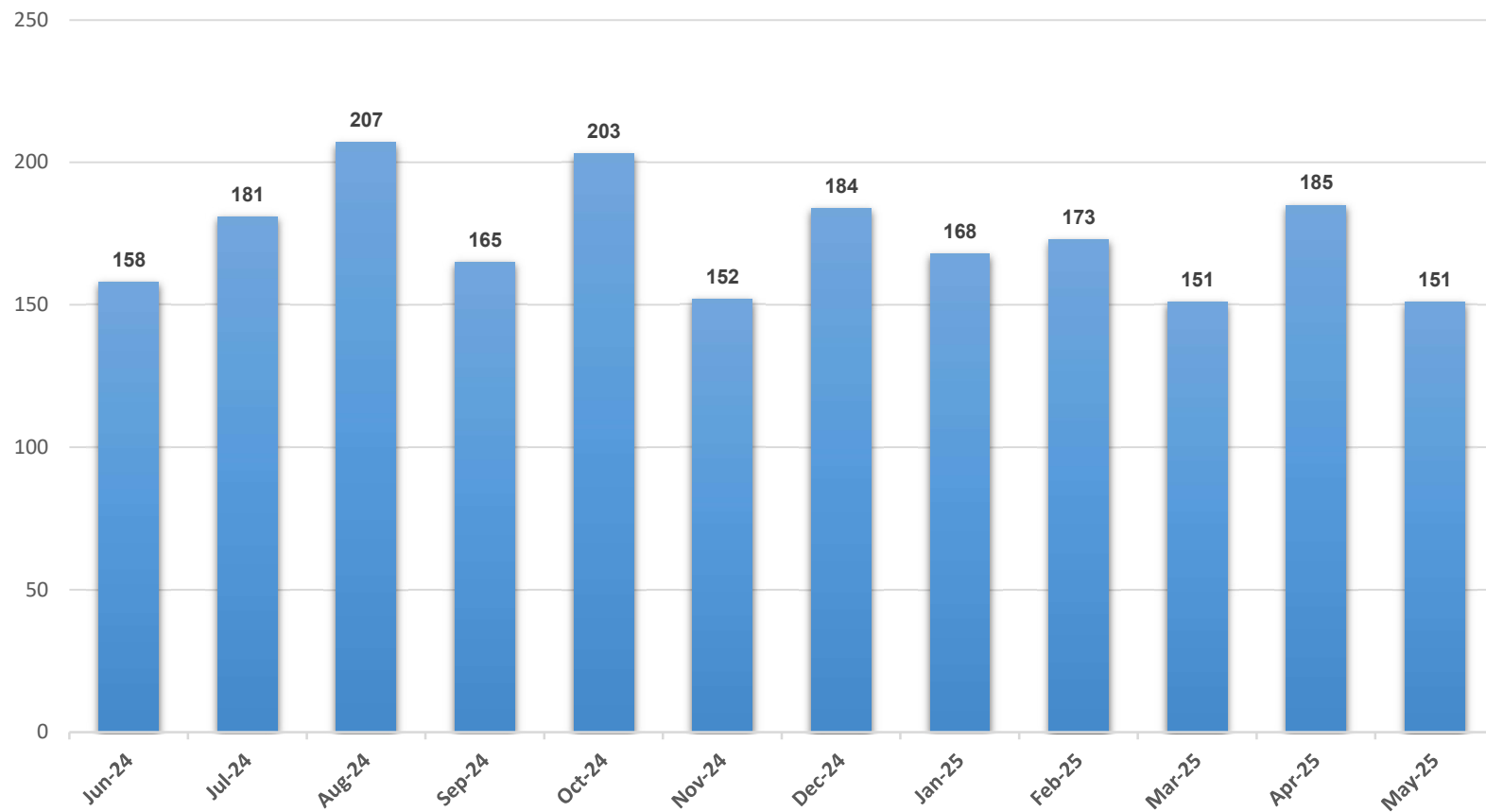
*The chart above represents the number of children in foster care at the end of the month.

Entries into Foster Care During the Month, Statewide



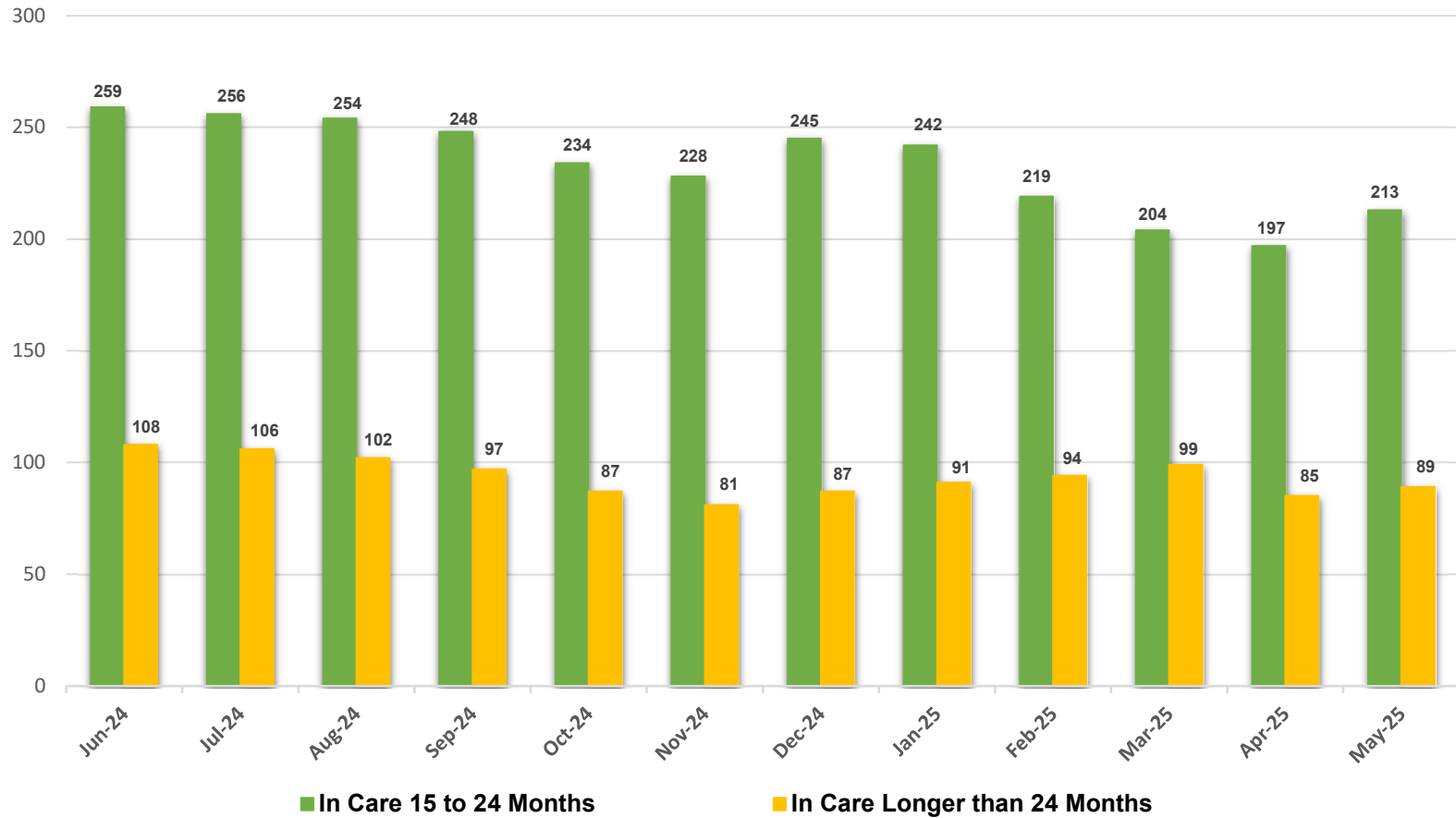
*The chart above represents the number of entries into foster care during the month.

Discharges from Foster Care During the Month, Statewide



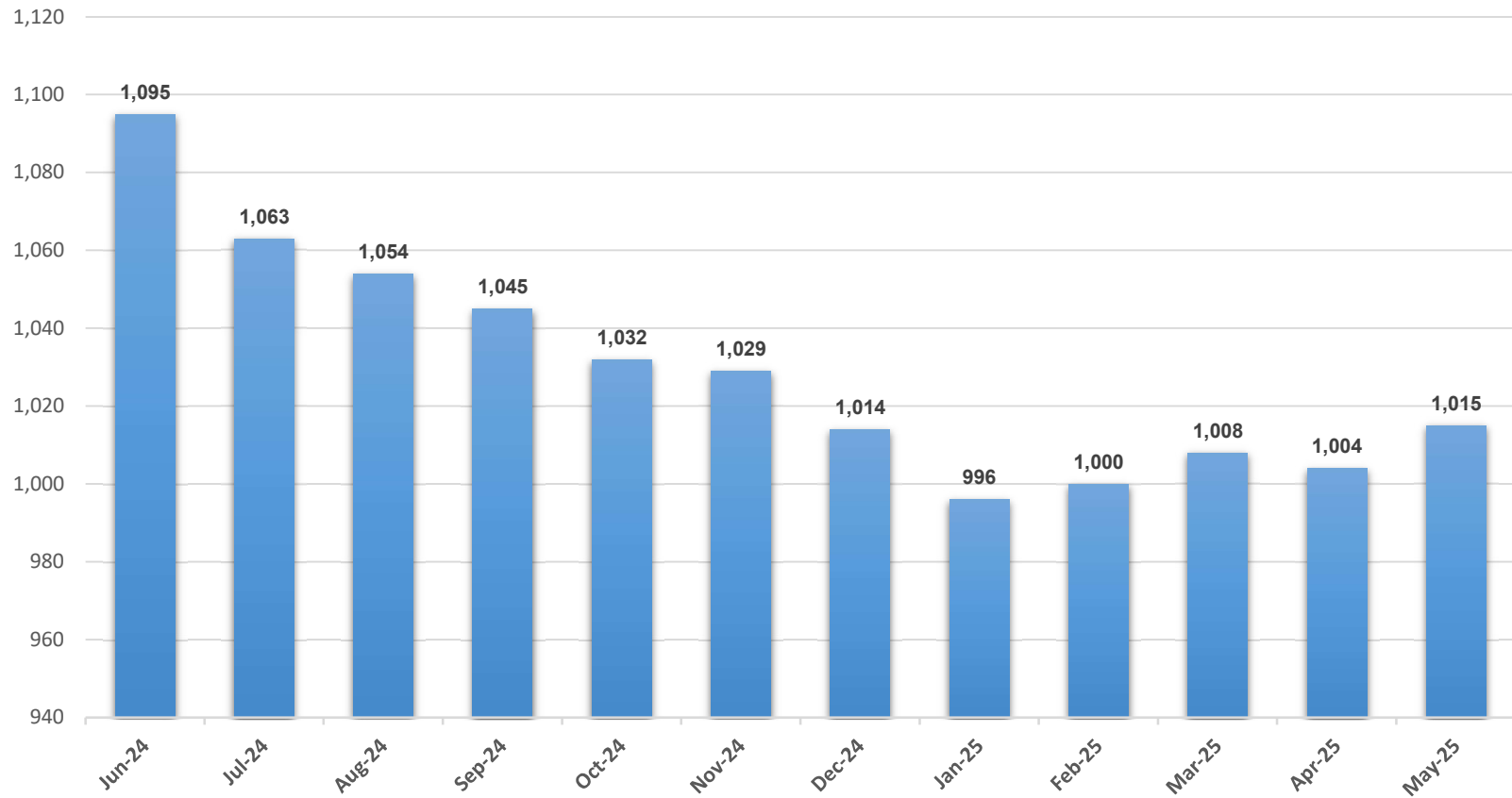
***The chart above represents the number of discharges from foster care during the month.**

Children with a Goal of Reunification, Statewide



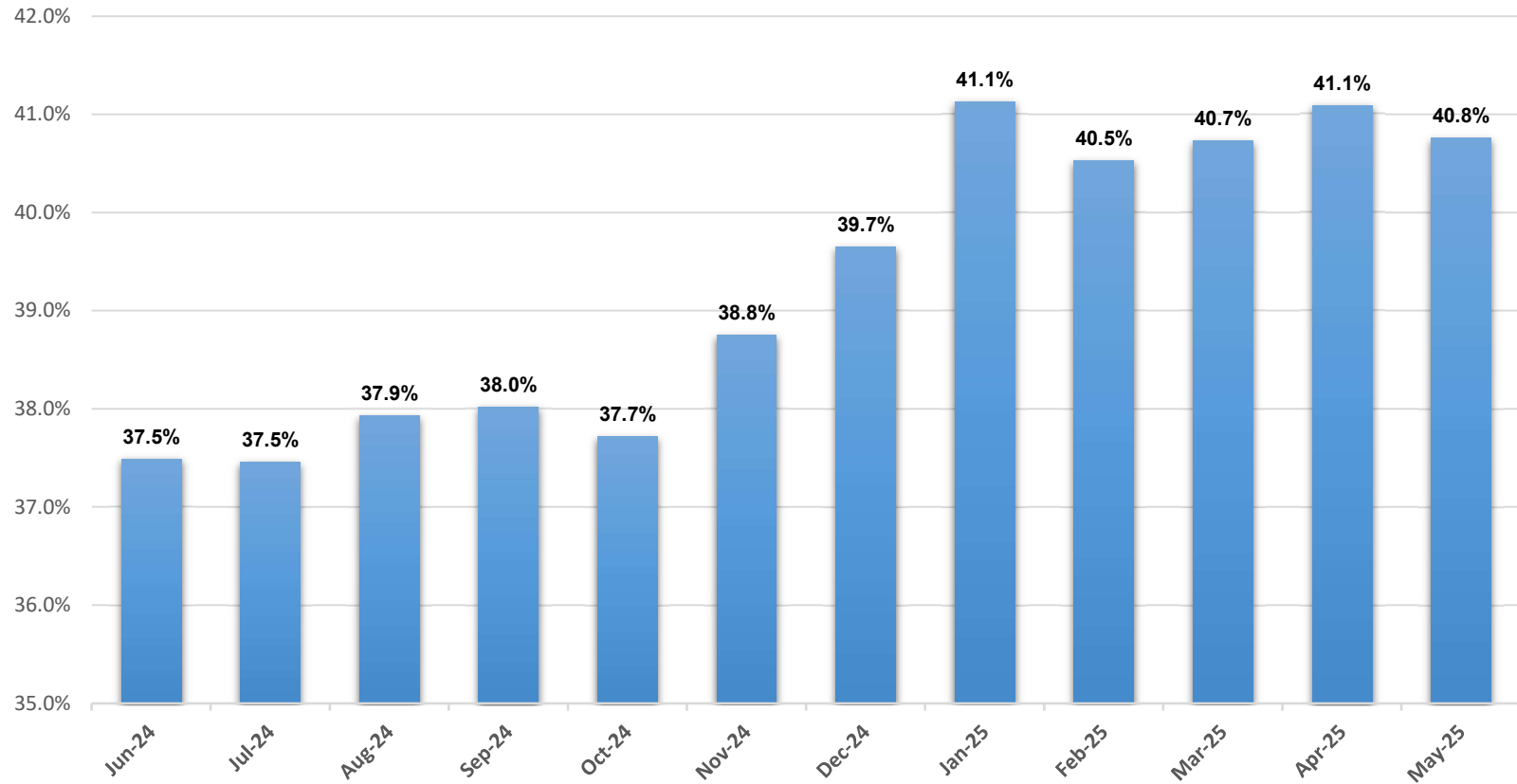
*The chart above represents the number of children with a goal of reunification at the end of each month.

Children in Foster Care 24 Months or Longer, Statewide



***The chart above represents the number of children who have resided in foster care for 24 consecutive months or longer at the end of the month.**

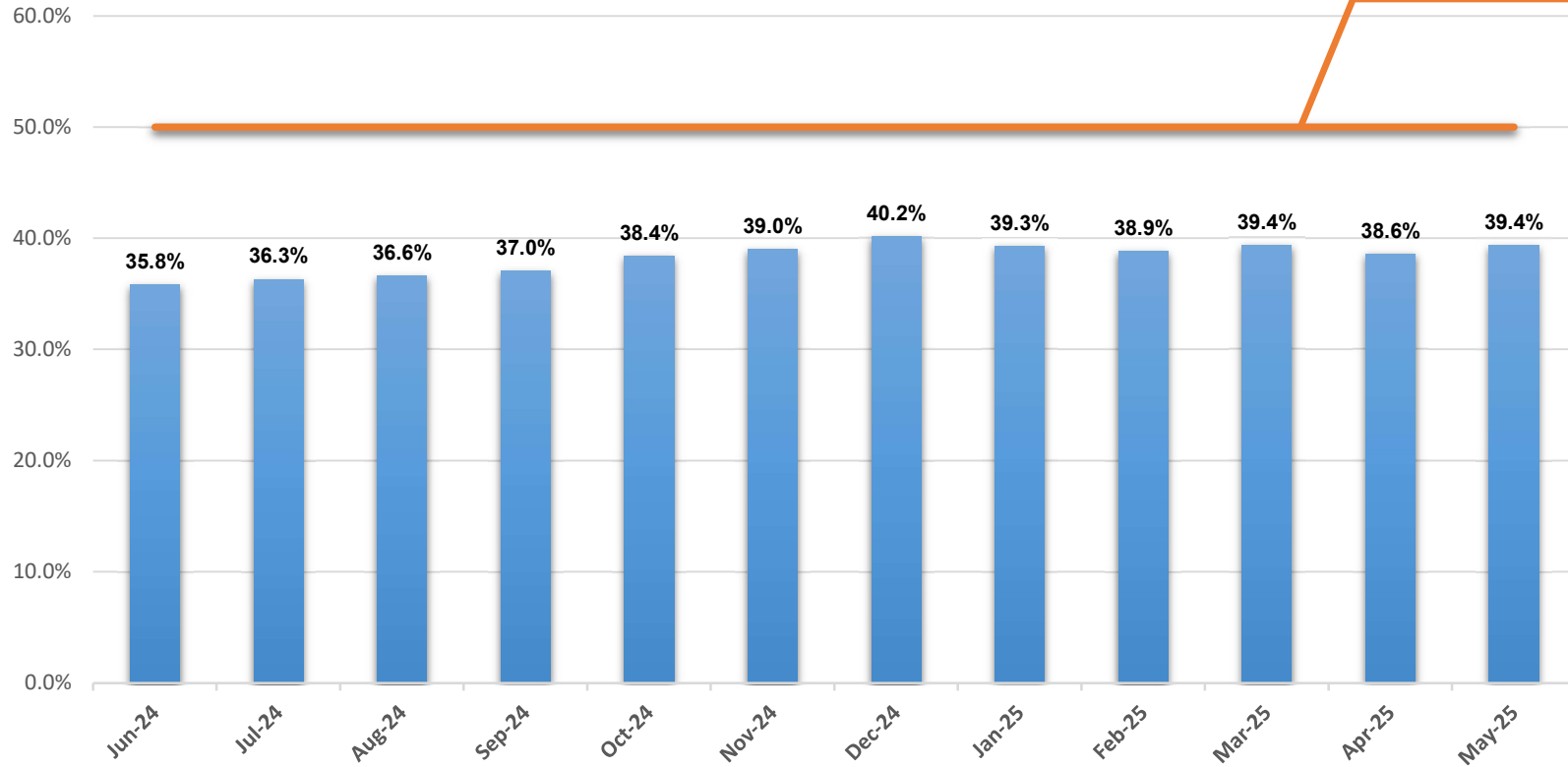
Children Entering Care whose First Placement is with Relative, Statewide



***The chart above represents the percentage of entries into care for the 12-month period concluding at the end of each month in which the child's first placement was with a relative or fictive kin.**

Children Placed with Relatives, Statewide

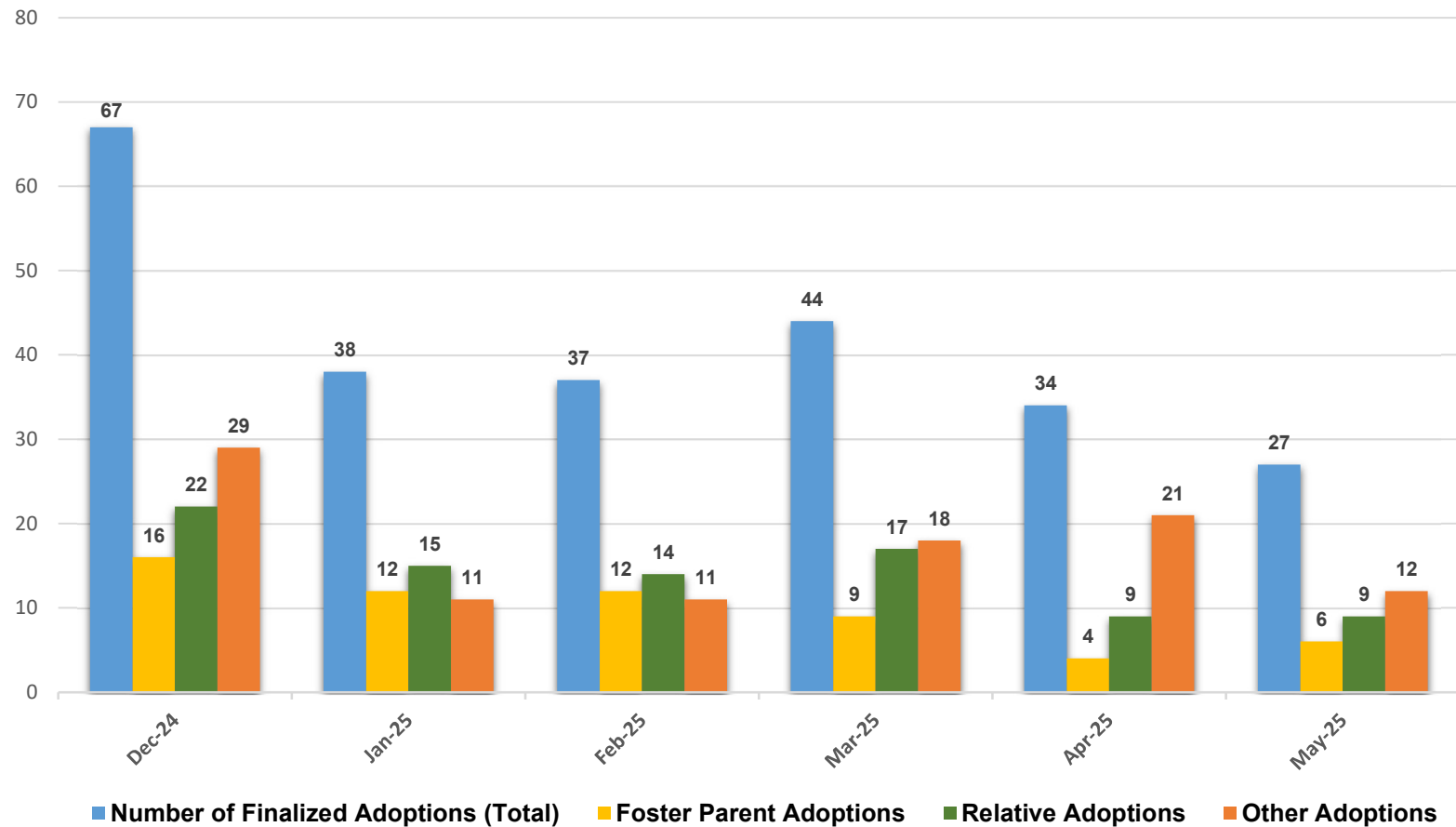
Goal = 50%



***The chart above represents the percentage of children residing with relatives at the end of each month.**

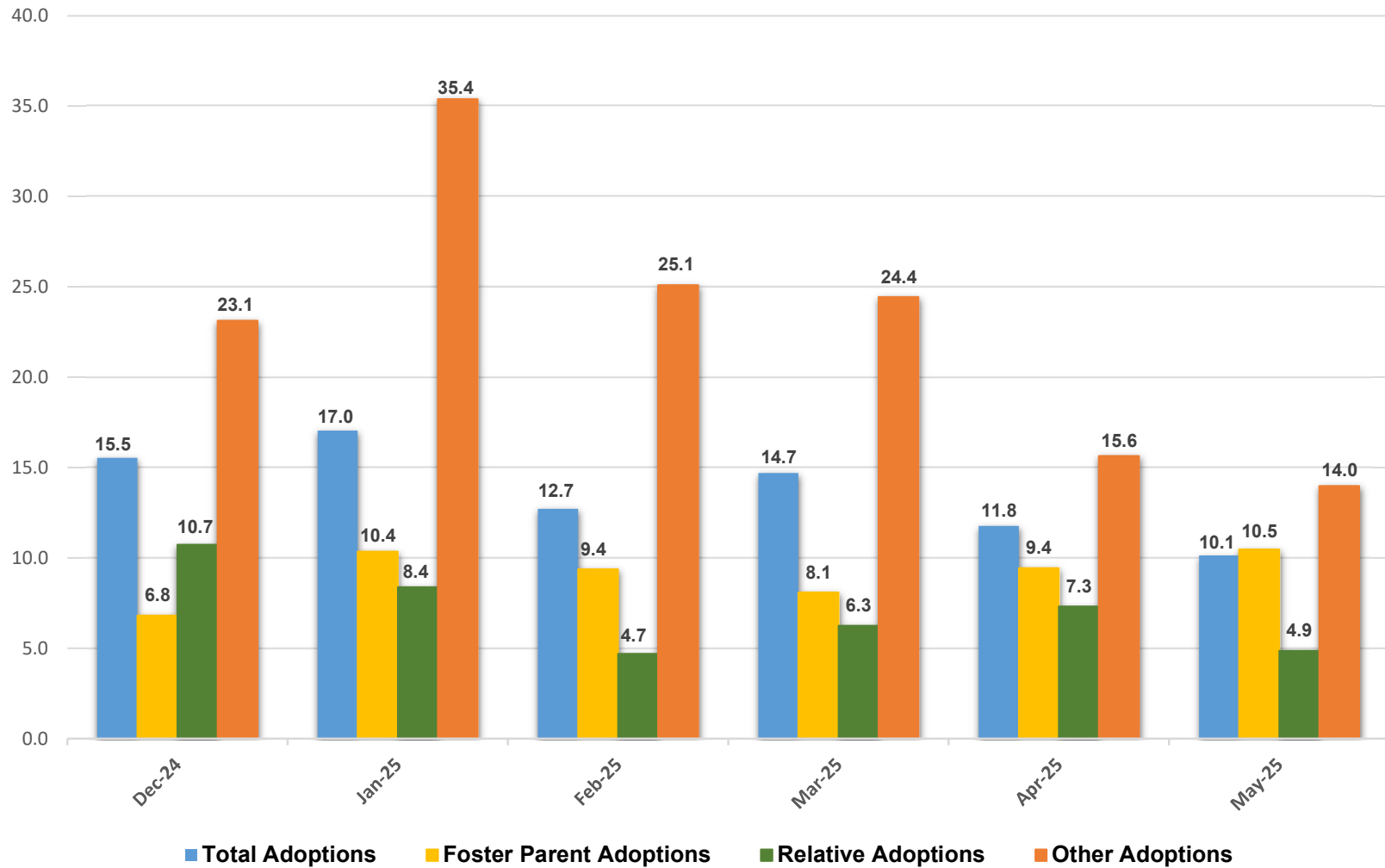
****Children are considered to be residing with relatives if they are placed in a provisional relative or provisional fictive kin home, relative or fictive kin foster home, relative pre-adoptive home, ICPC home, or temporary family placement.***

Adoptions Finalized During the Month, Statewide



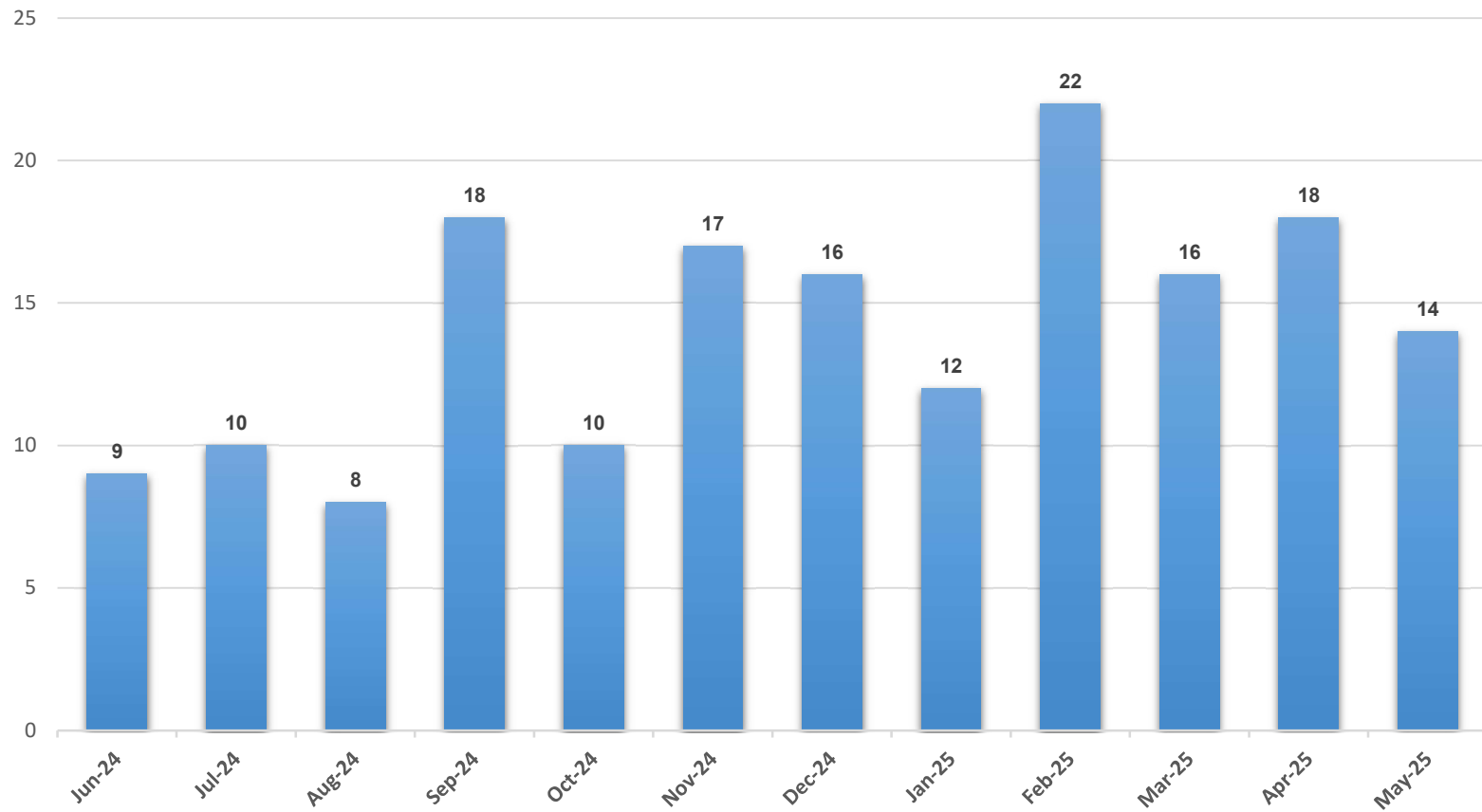
*The chart above represents the number of children whose adoptions were finalized, broken down by adoption type, during each month.

Length of Time from TPR to Adoption Finalization (Months), Statewide



*The chart above represents the average length of time (months) it takes from a child's most recent termination of parental rights (TPR) until finalization for all adoptions finalized during each month.

Discharges from Care to Guardianship, Statewide



*The chart above represents the number of children who were discharged to guardianship each month.