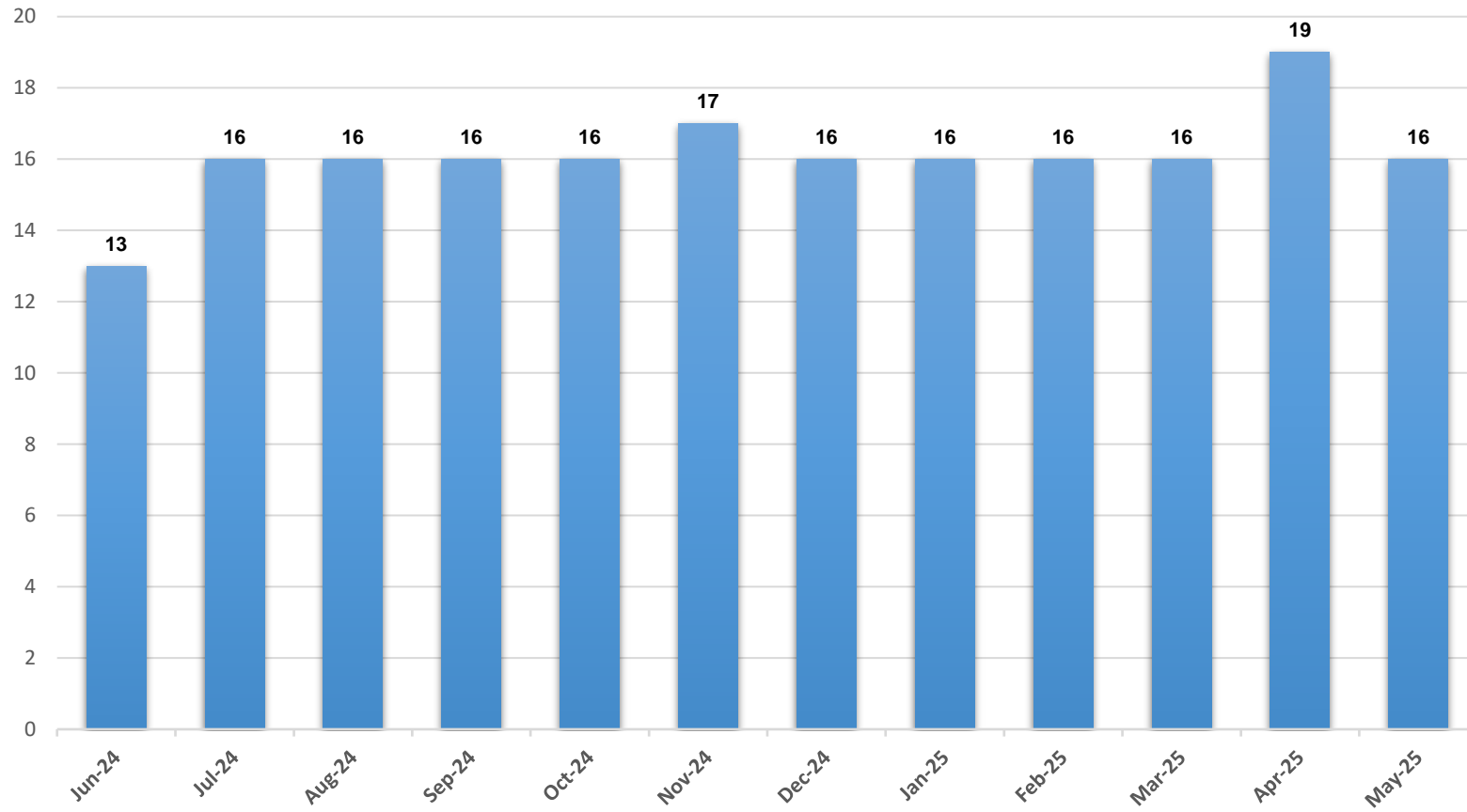
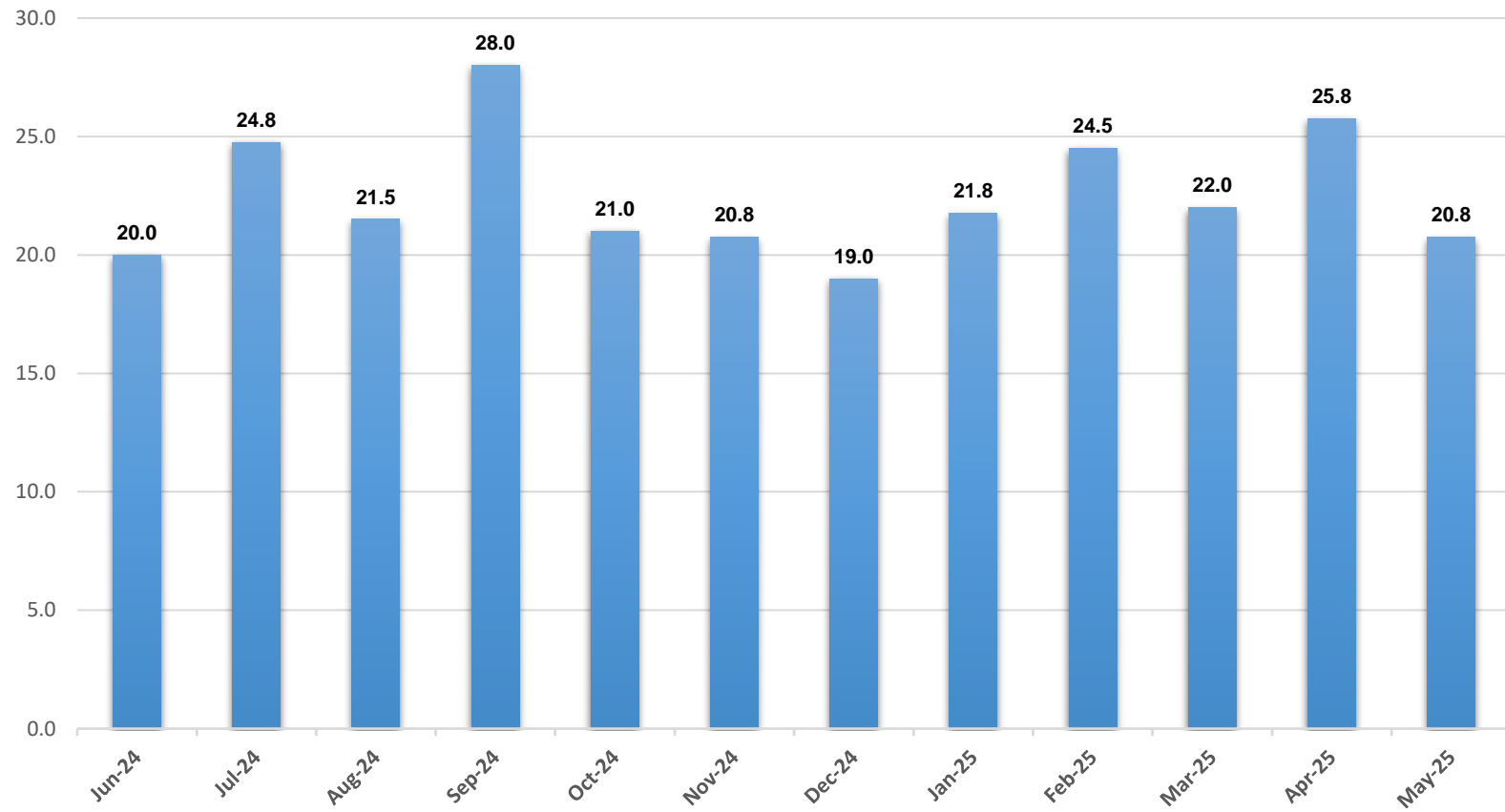


Children in Foster Care, Howard



*The chart above represents the number of children in foster care at the end of the month.

Average Family Service Worker Caseload, Howard



*The chart above represents the average family service worker caseload at the end of each month.

Children Placed in Emergency Shelter for Longer than 14 Days, Howard

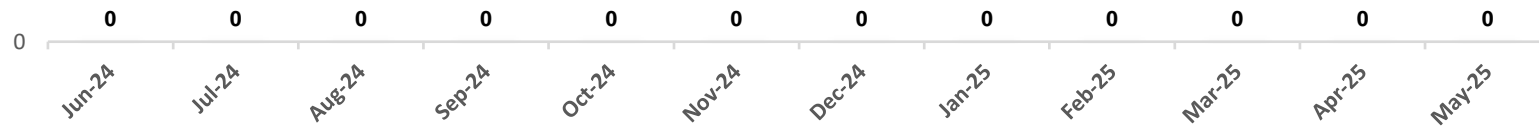
1



***The chart above represents the number of children residing in an emergency shelter for longer than 14 consecutive days at the end of each month.**

Children Ages 12 and Younger Placed in Congregate Care, Howard

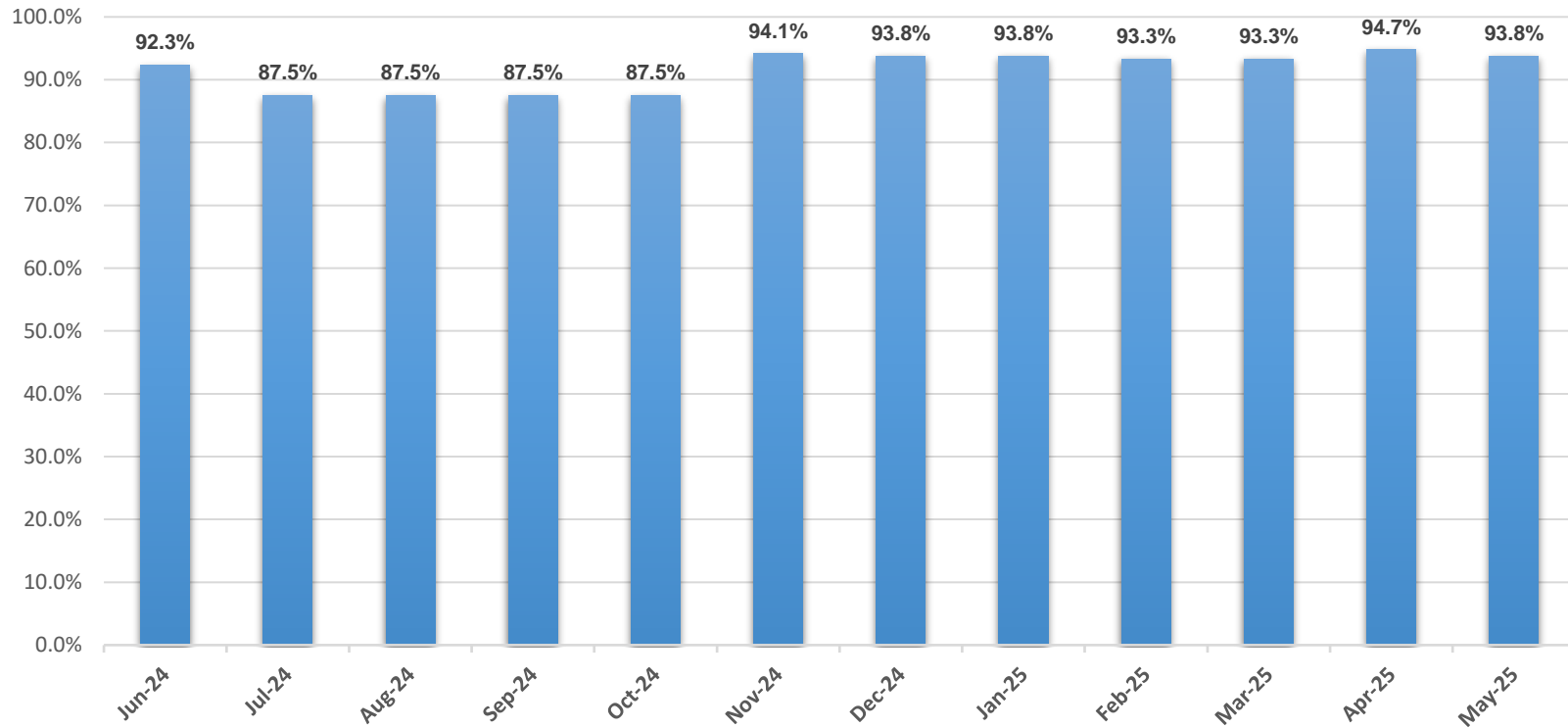
1



***The chart above represents the number of children ages 12 and younger placed in congregate care at the end of each month.**

****For this measure, "Congregate Care" includes Emergency Shelter and QRTP placements as well as Residential Treatment Care and Residential Care Only programs that do not qualify as a family-like setting.***

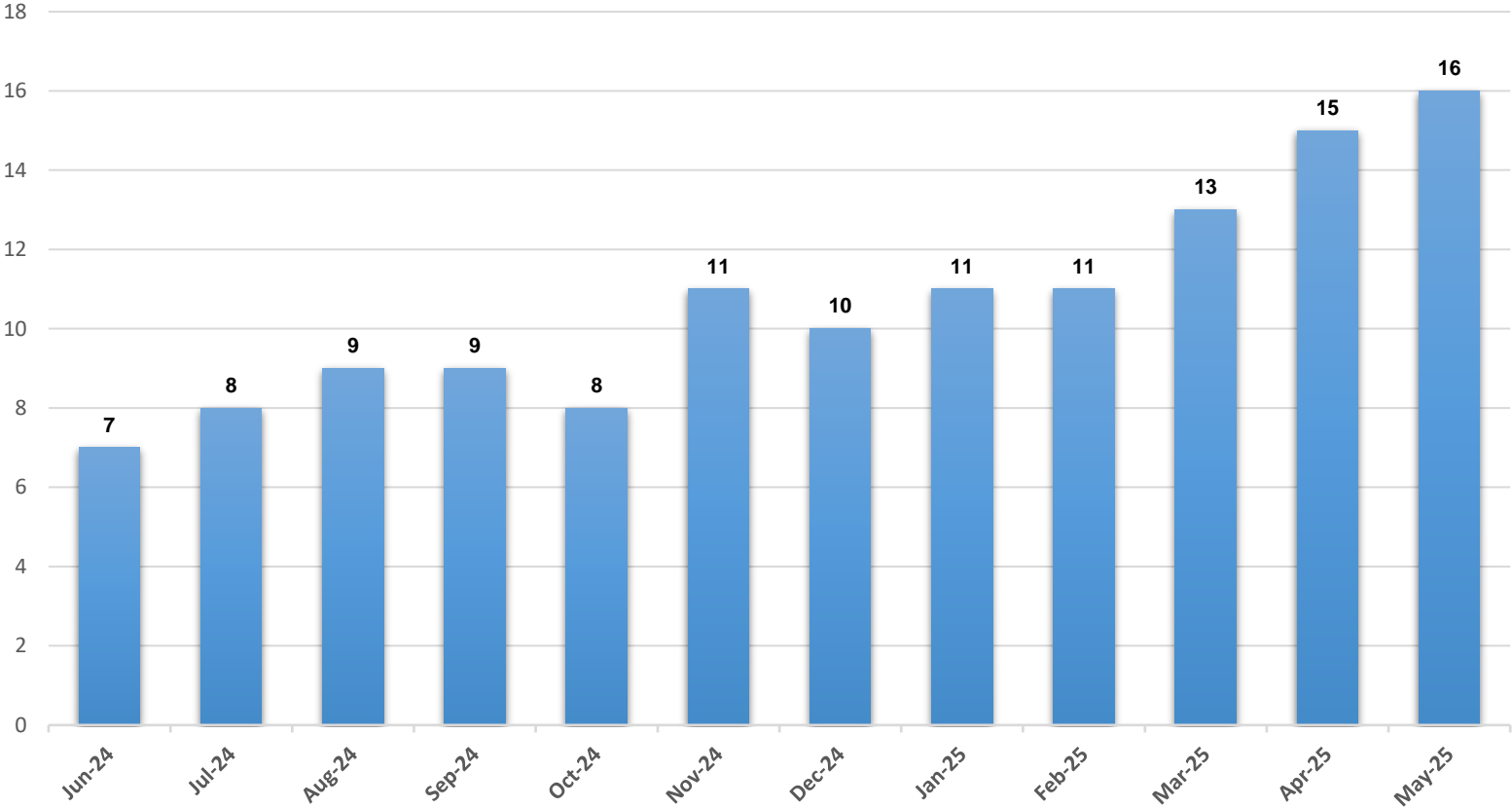
Children Placed in Family-Like Setting, Howard



***The chart above represents the percentage of children residing in a family-like setting at the end of each month.**

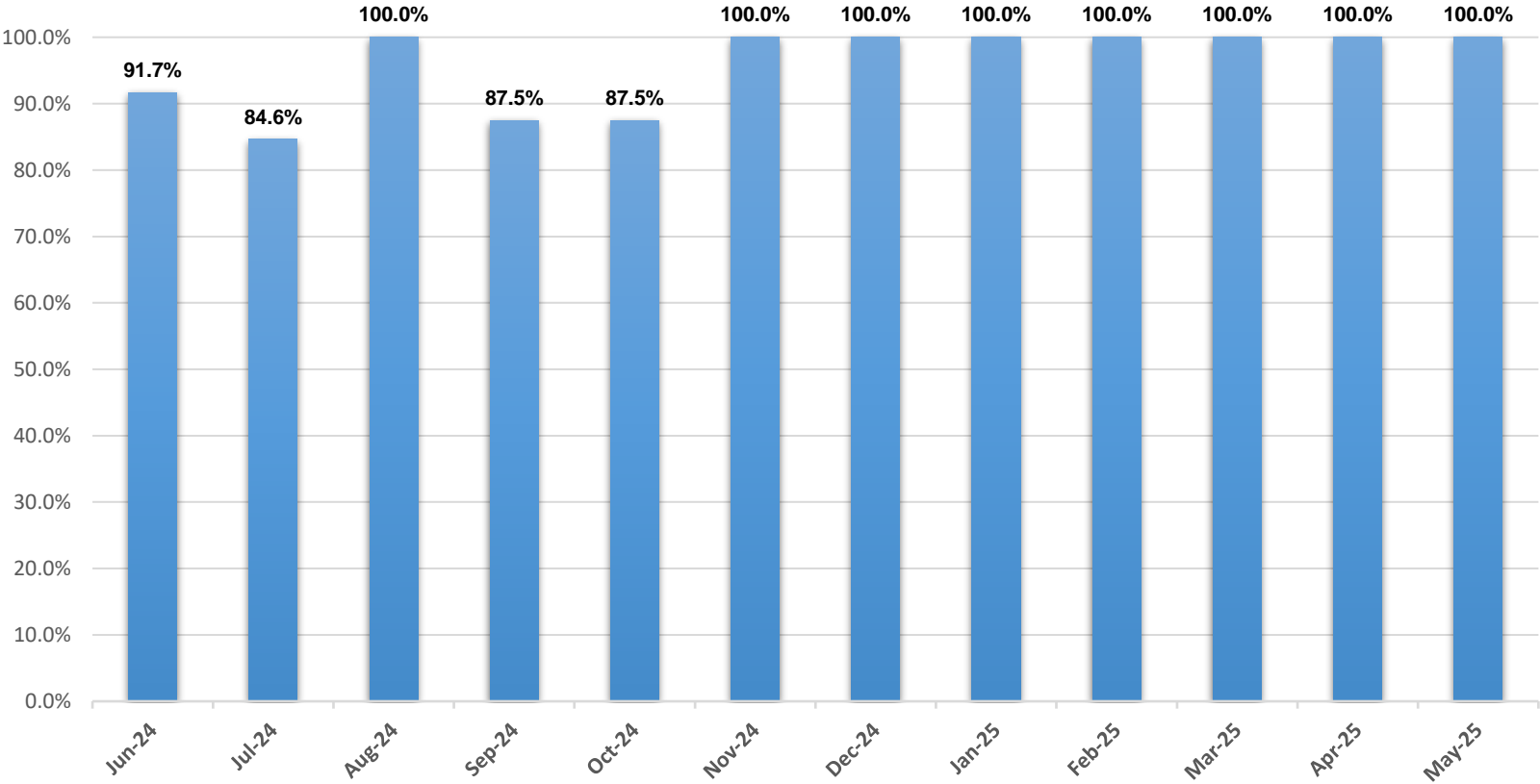
****Family-Like Settings include both family-like homes (e.g., foster family homes, relative placements, pre-adoptive homes, therapeutic foster homes) and family-like residential facilities (i.e., home-like residential settings with live-in house parents).***

Foster Family Homes, Howard



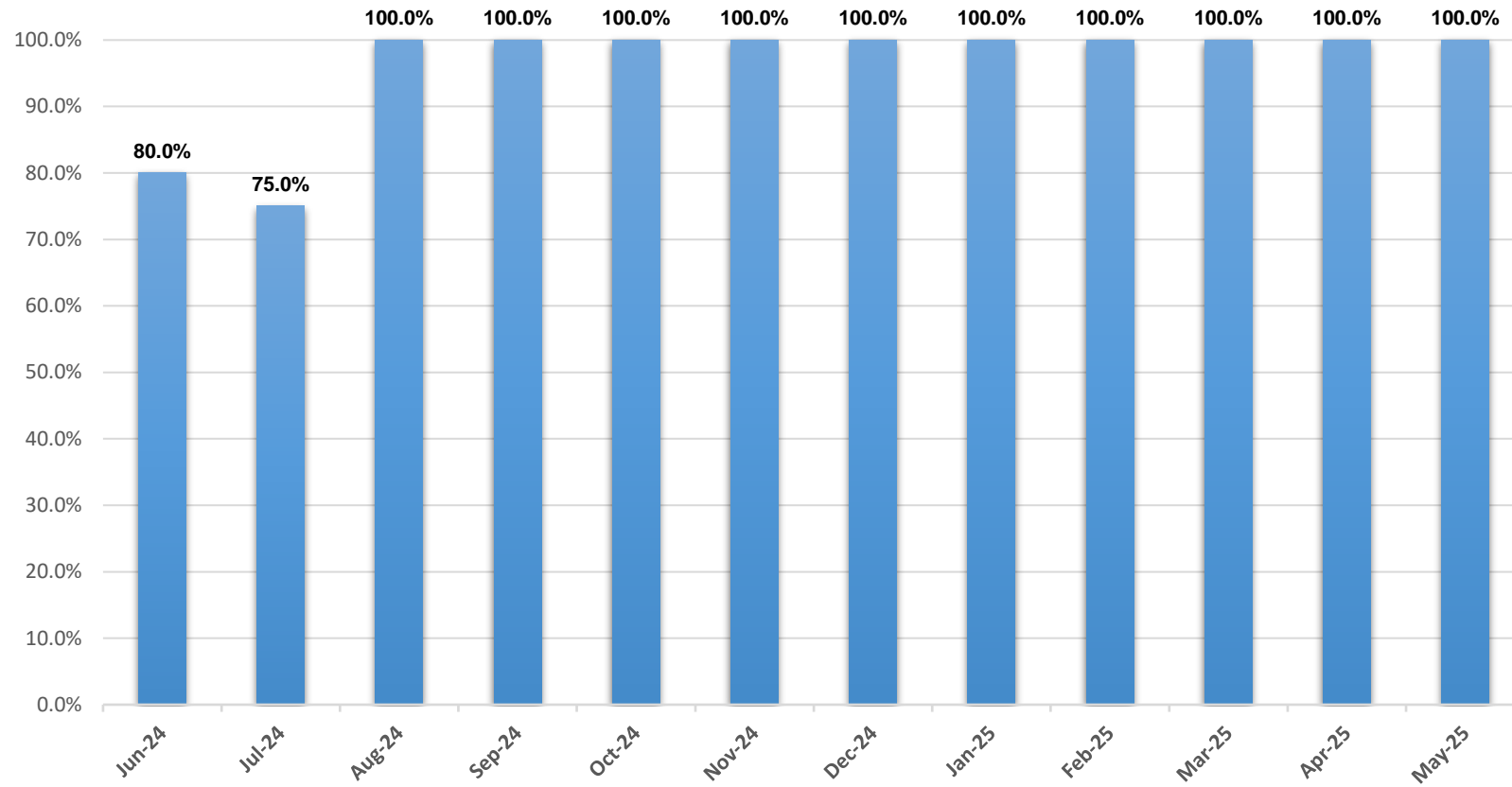
***The chart above represents the number of approved foster homes at the end of each month.**

Foster Care Monthly Visits, Howard



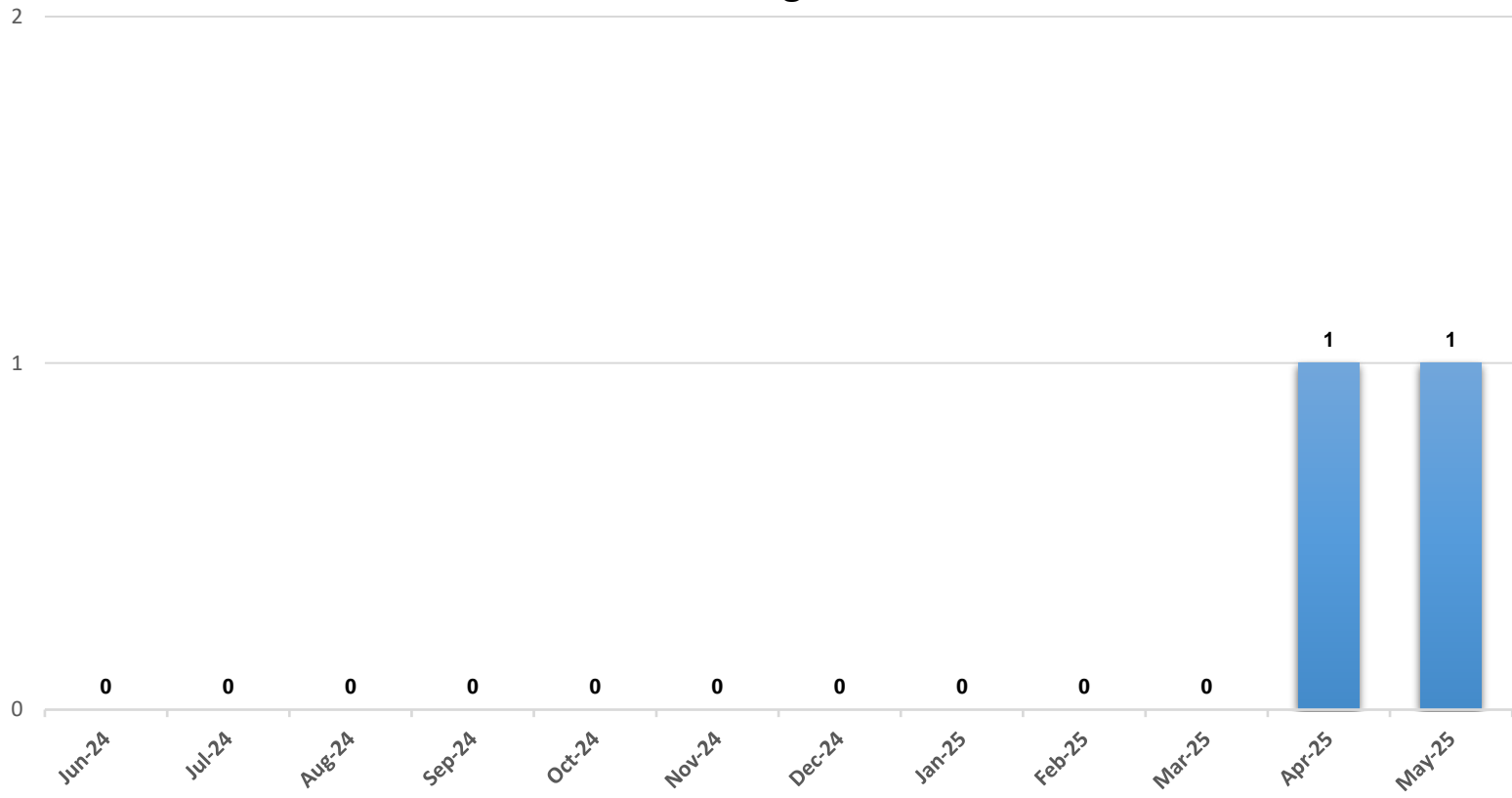
***The chart above represents the percentage of required visits made by family service workers to see children in foster care during the month.**

In-Home Monthly Visits, Howard



*The chart above represents the percentage of required visits made by family service workers to see in-home families during the month.

Overdue Investigations, Howard



***The chart above represents the number of overdue investigations at the end of each month.**

***An investigation that is overdue does not mean that the investigation is being ignored or is not being actively worked; rather, it signifies that the investigation has not yet been fully completed and approved within the required timeframe.**