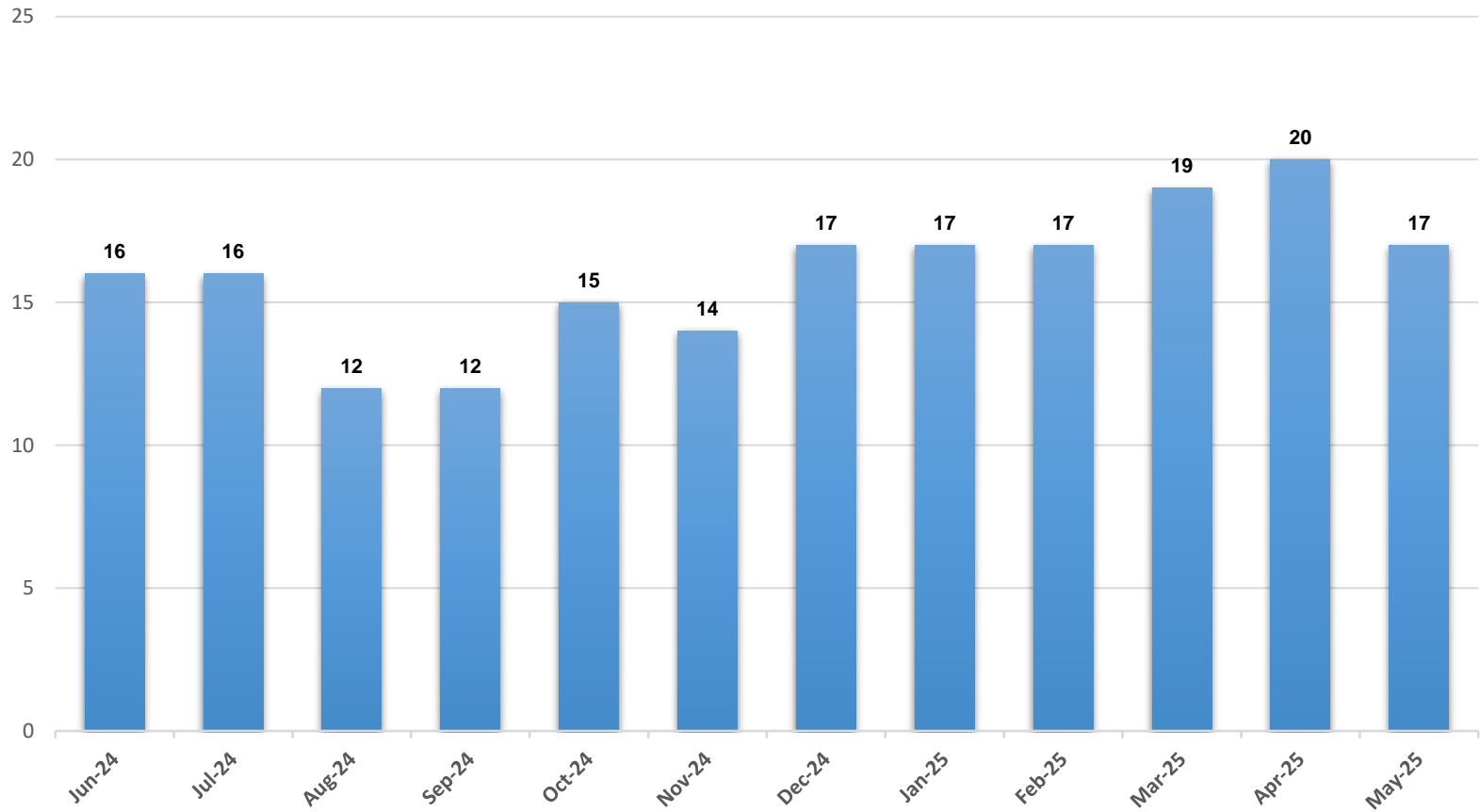
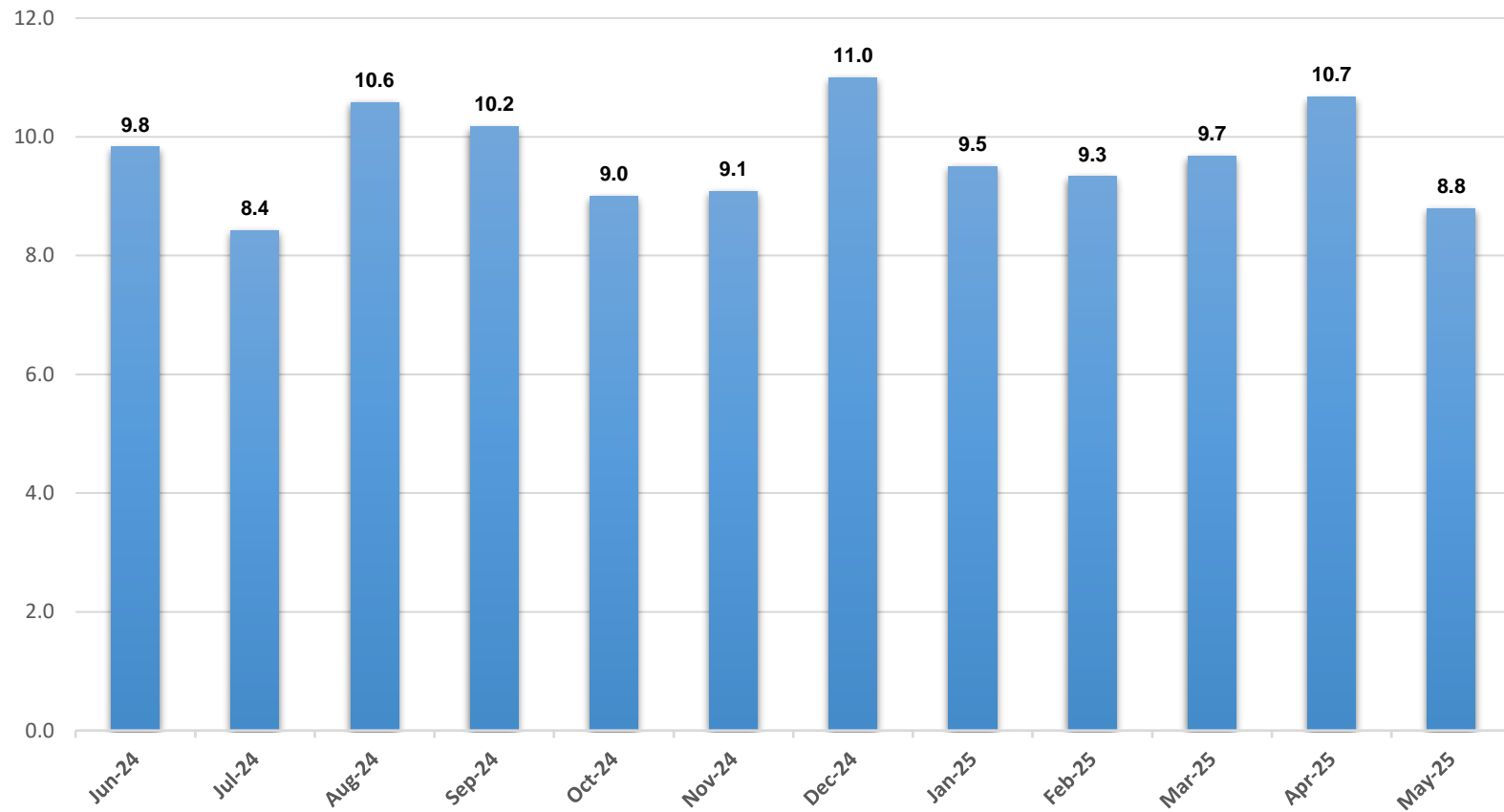


Children in Foster Care, Phillips



\*The chart above represents the number of children in foster care at the end of the month.

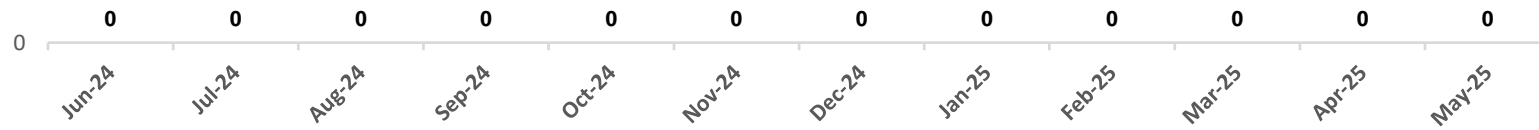
### Average Family Service Worker Caseload, Phillips



\*The chart above represents the average family service worker caseload at the end of each month.

## Children Placed in Emergency Shelter for Longer than 14 Days, Phillips

1



\*The chart above represents the number of children residing in an emergency shelter for longer than 14 consecutive days at the end of each month.

## Children Ages 12 and Younger Placed in Congregate Care, Phillips

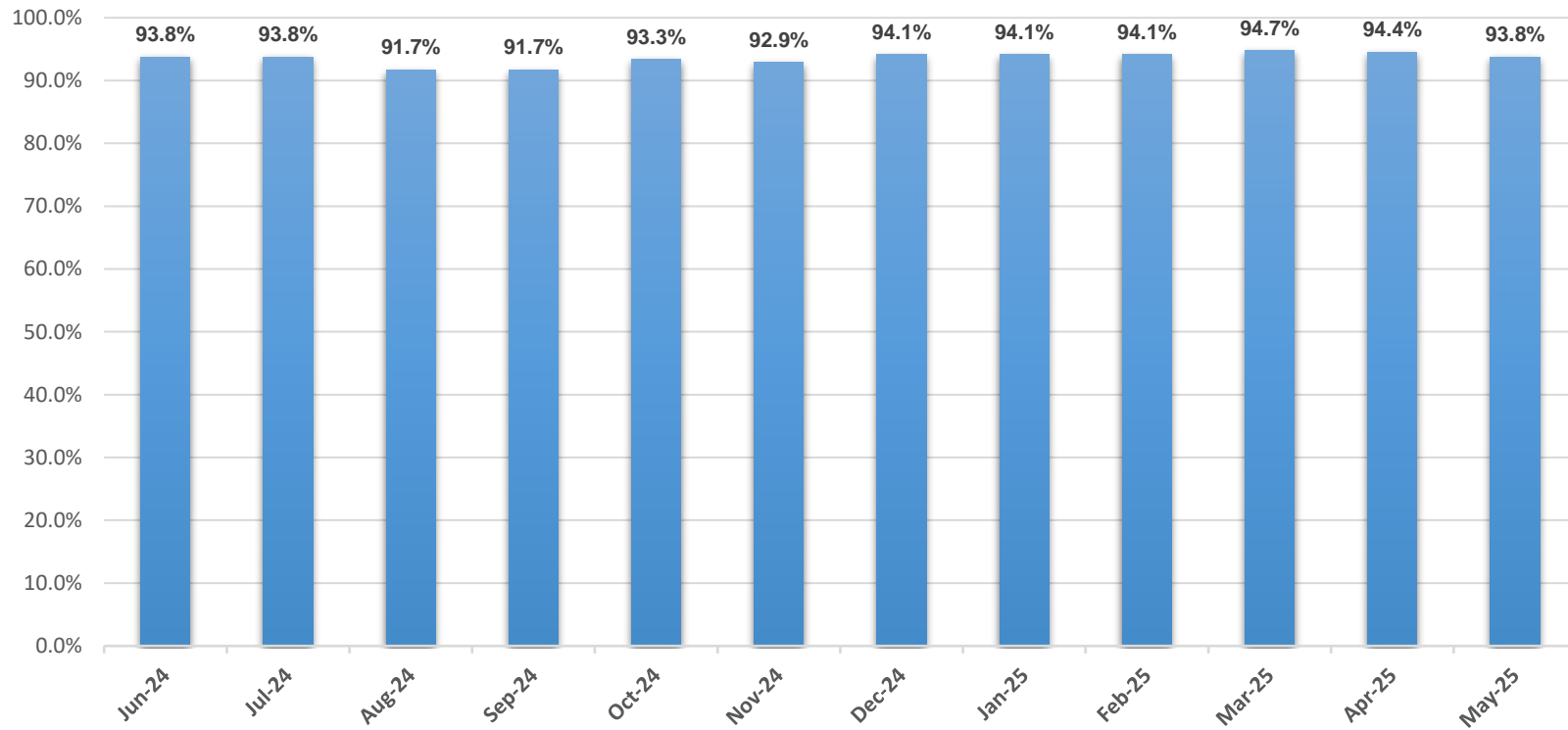
1



**\*The chart above represents the number of children ages 12 and younger placed in congregate care at the end of each month.**

***\*For this measure, "Congregate Care" includes Emergency Shelter and QRTP placements as well as Residential Treatment Care and Residential Care Only programs that do not qualify as a family-like setting.***

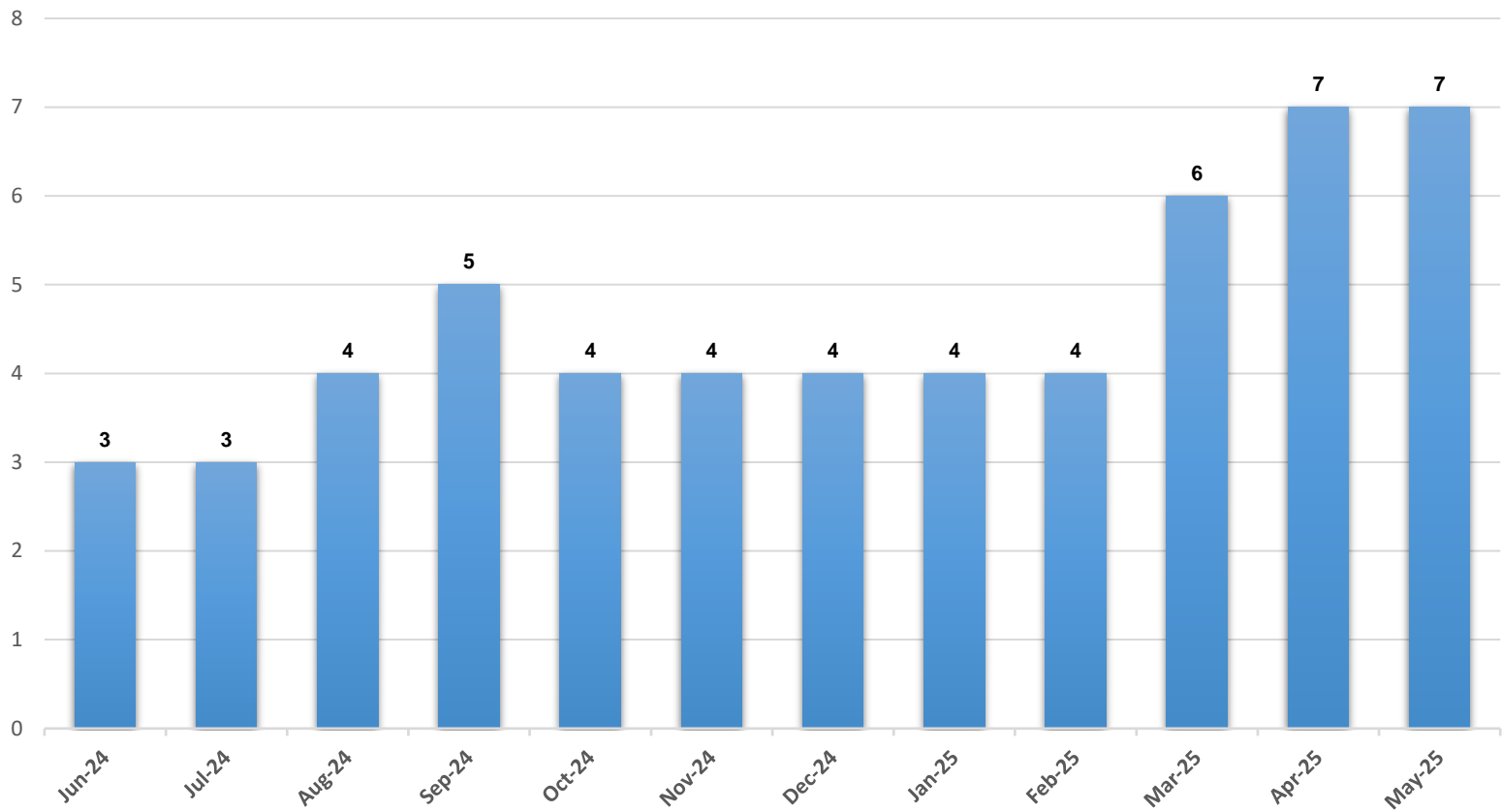
## Children Placed in Family-Like Setting, Phillips



**\*The chart above represents the percentage of children residing in a family-like setting at the end of each month.**

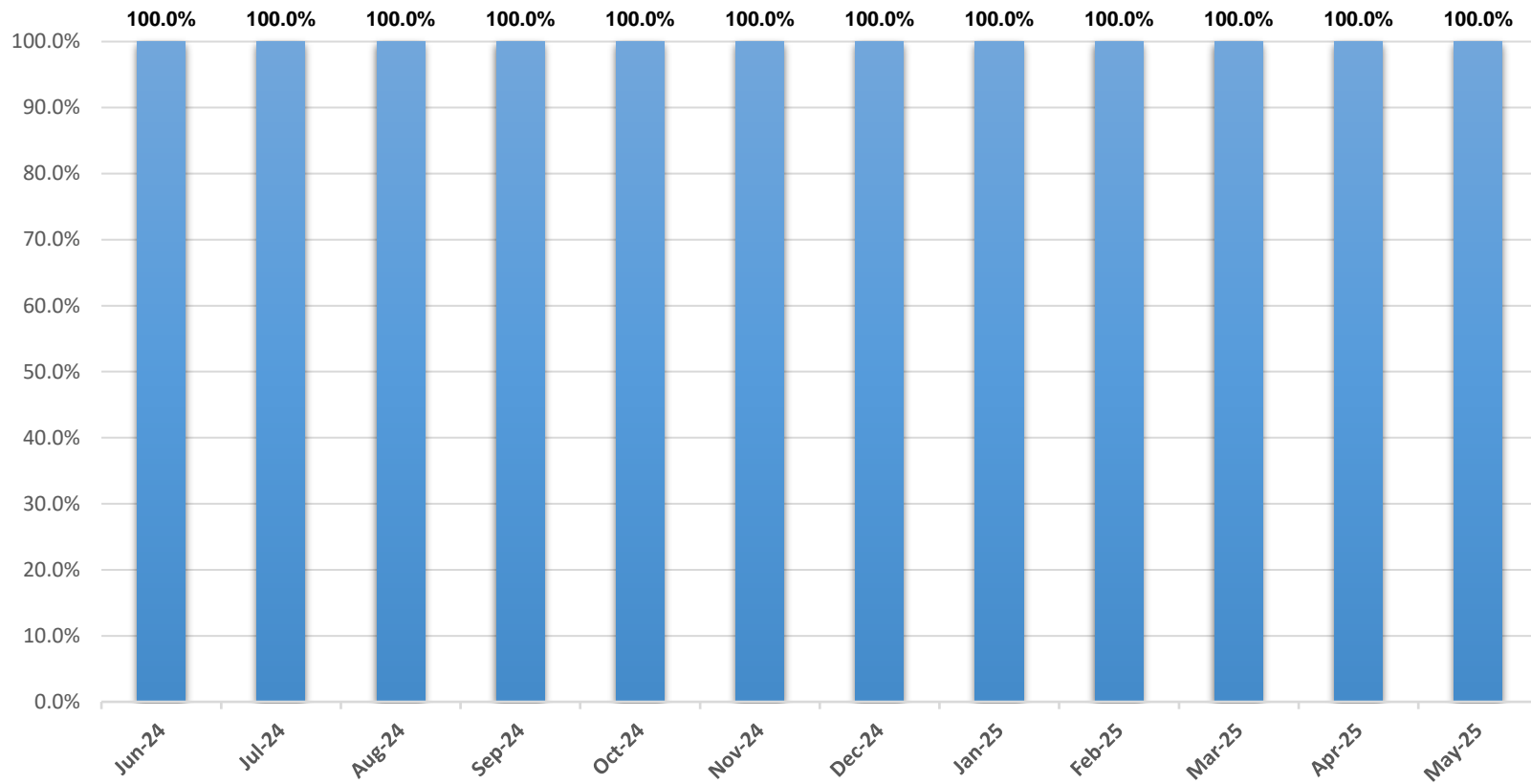
***\*Family-Like Settings include both family-like homes (e.g., foster family homes, relative placements, pre-adoptive homes, therapeutic foster homes) and family-like residential facilities (i.e., home-like residential settings with live-in house parents).***

Foster Family Homes, Phillips



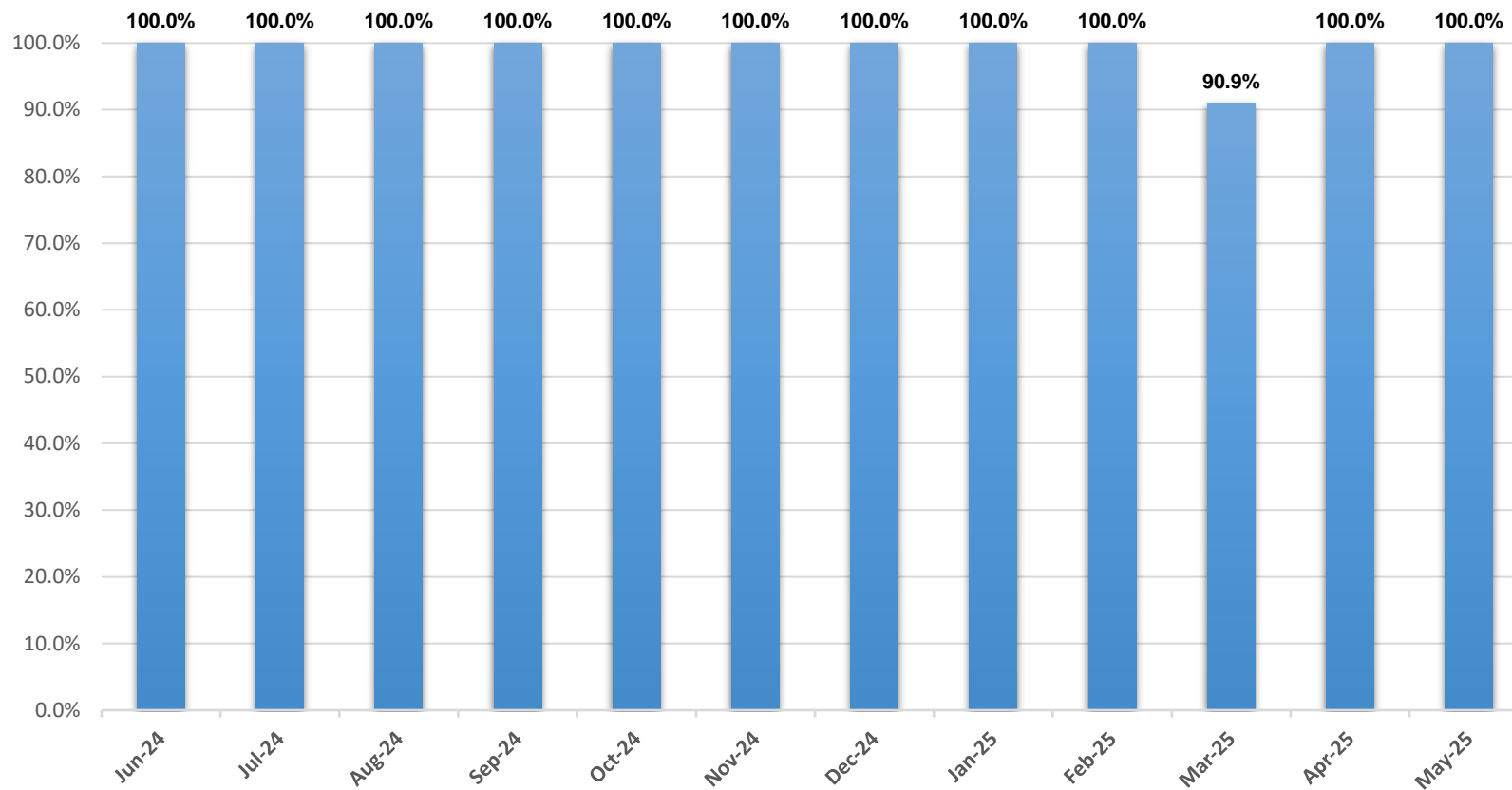
\*The chart above represents the number of approved foster homes at the end of each month.

### Foster Care Monthly Visits, Phillips



**\*The chart above represents the percentage of required visits made by family service workers to see children in foster care during the month.**

### In-Home Monthly Visits, Phillips



**\*The chart above represents the percentage of required visits made by family service workers to see in-home families during the month.**



Overdue Investigations, Phillips

1



**\*The chart above represents the number of overdue investigations at the end of each month.**

**\*An investigation that is overdue does not mean that the investigation is being ignored or is not being actively worked; rather, it signifies that the investigation has not yet been fully completed and approved within the required timeframe.**