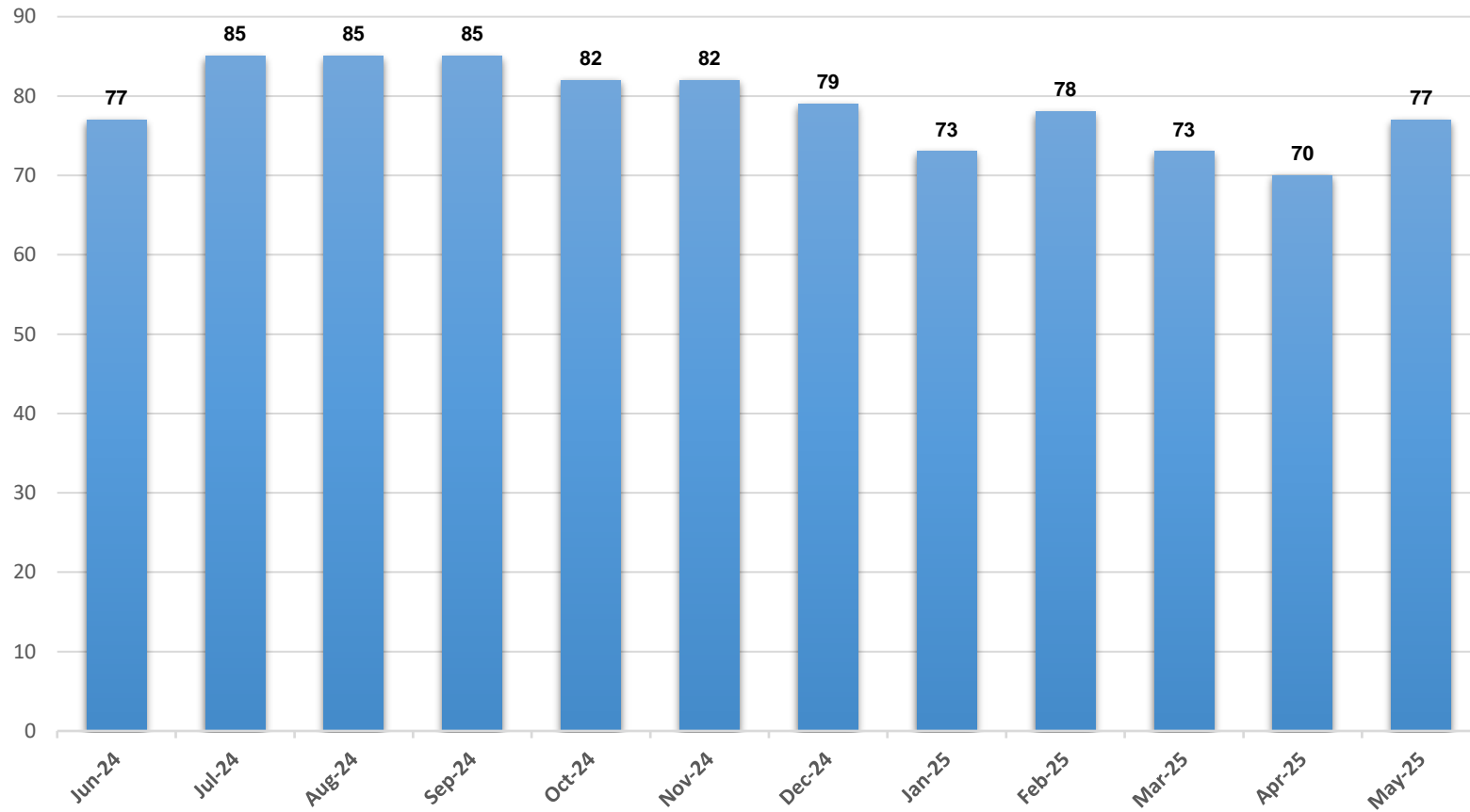
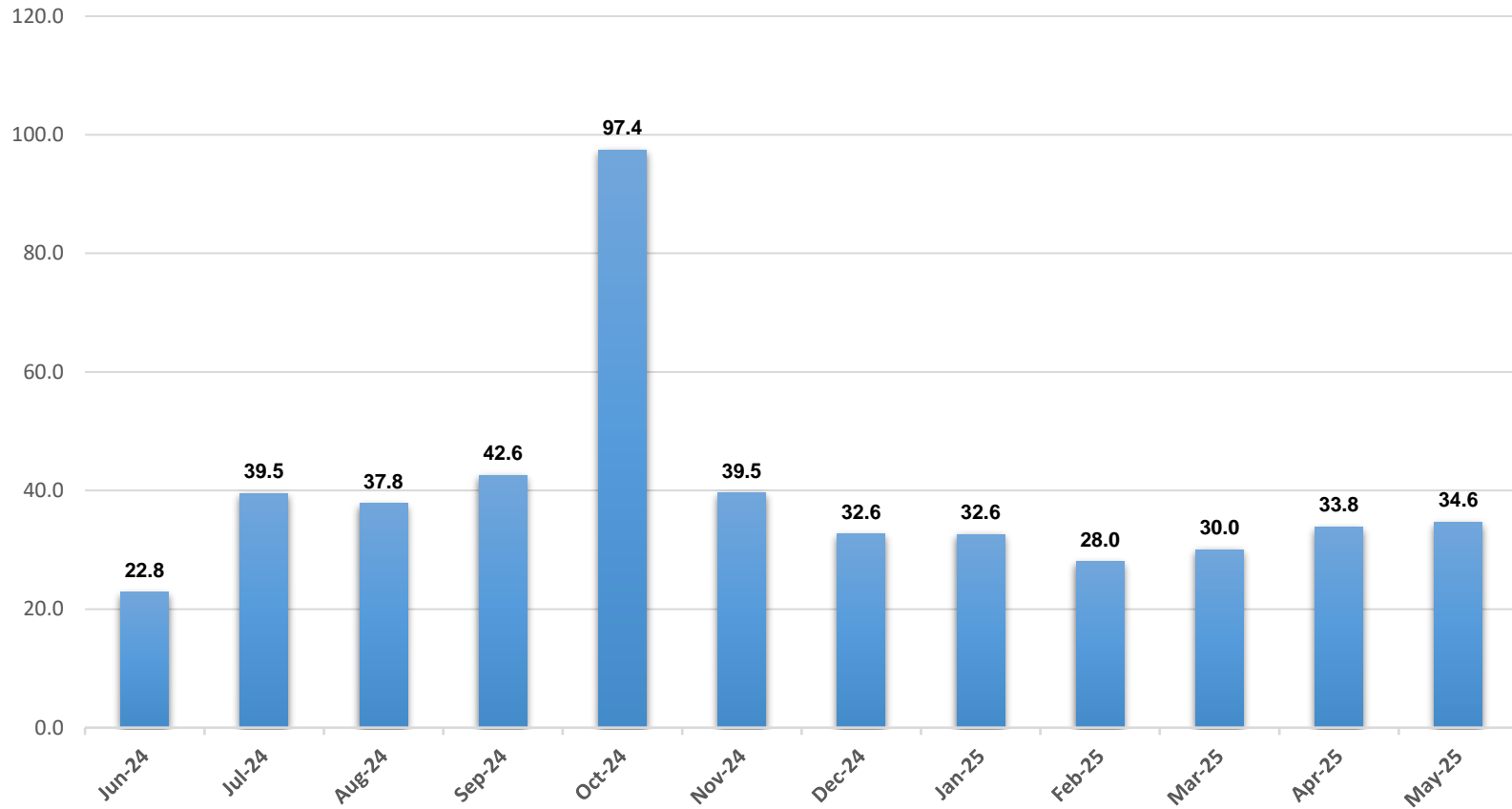


Children in Foster Care, Pulaski (Jacksonville)



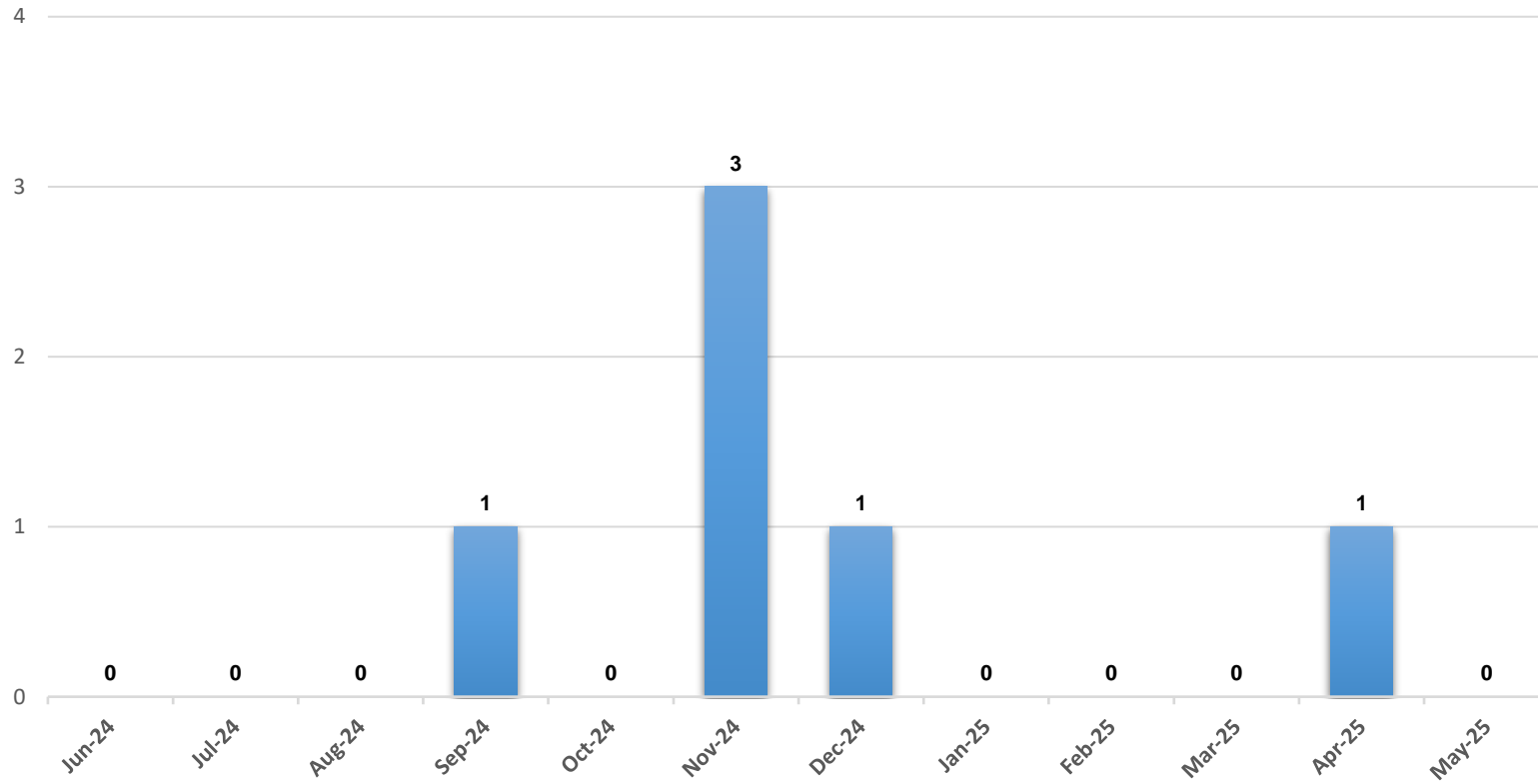
*The chart above represents the number of children in foster care at the end of the month.

Average Family Service Worker Caseload, Pulaski (Jacksonville)



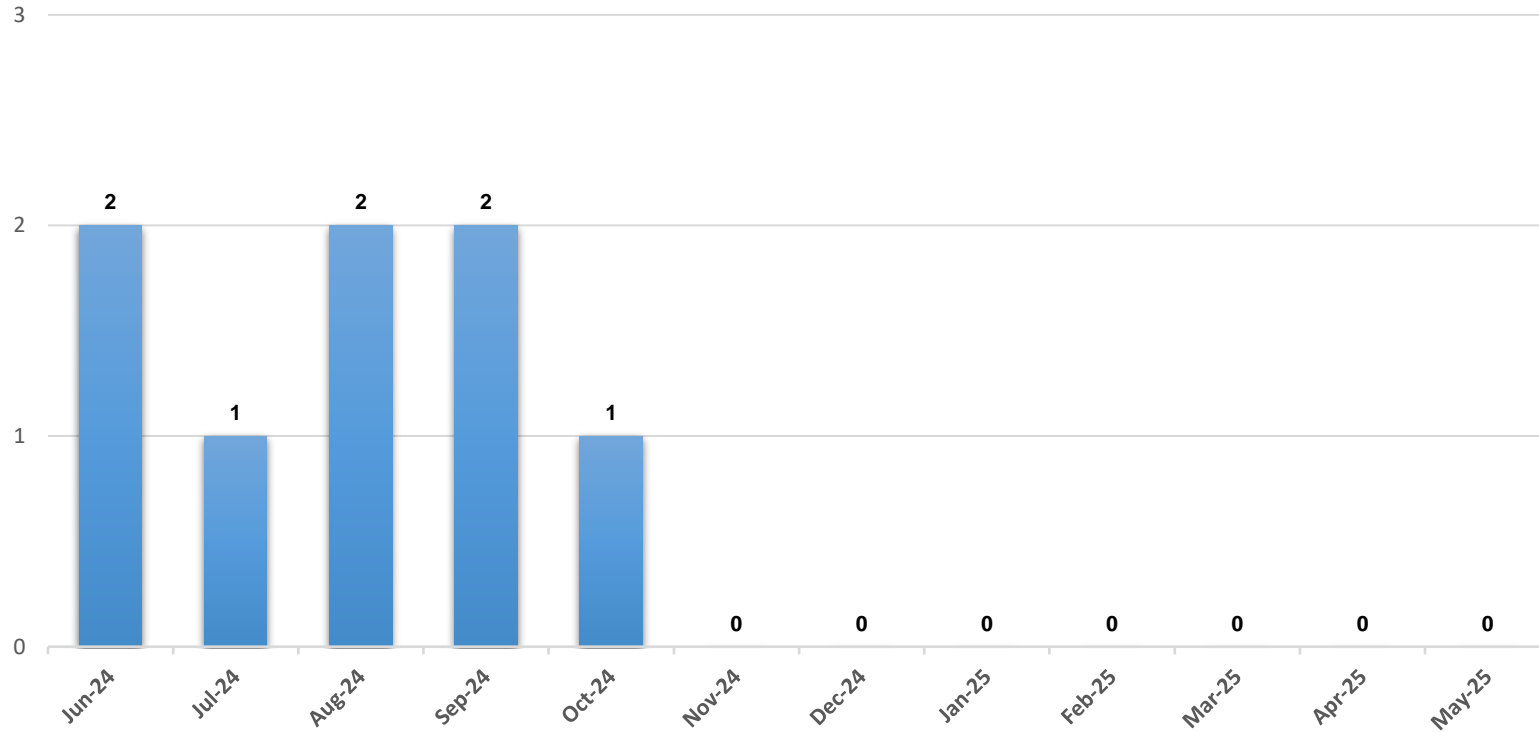
*The chart above represents the average family service worker caseload at the end of each month.

Children Placed in Emergency Shelter for Longer than 14 Days, Pulaski (Jacksonville)



*The chart above represents the number of children residing in an emergency shelter for longer than 14 consecutive days at the end of each month.

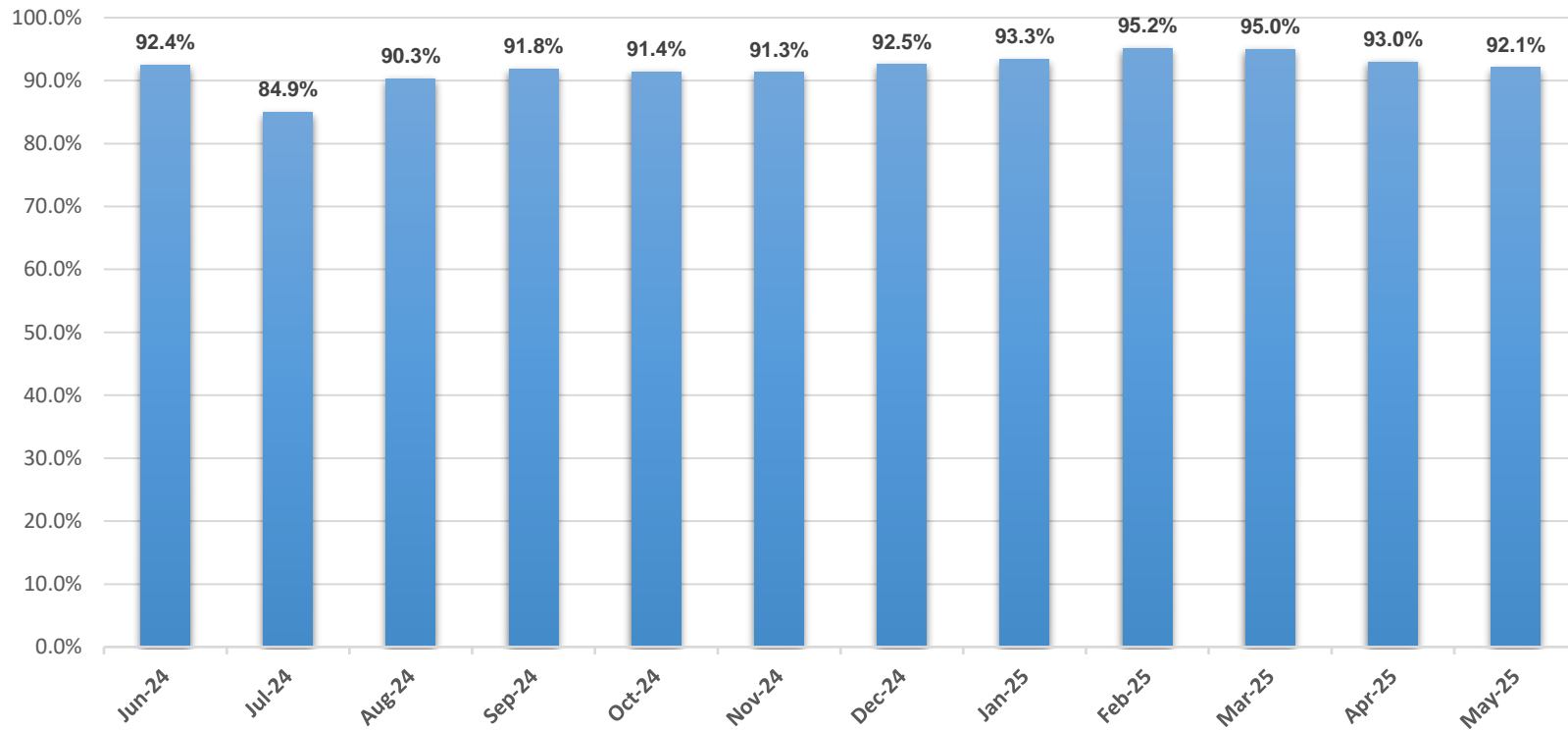
Children Ages 12 and Younger Placed in Congregate Care, Pulaski (Jacksonville)



***The chart above represents the number of children ages 12 and younger placed in congregate care at the end of each month.**

****For this measure, "Congregate Care" includes Emergency Shelter and QRTP placements as well as Residential Treatment Care and Residential Care Only programs that do not qualify as a family-like setting.***

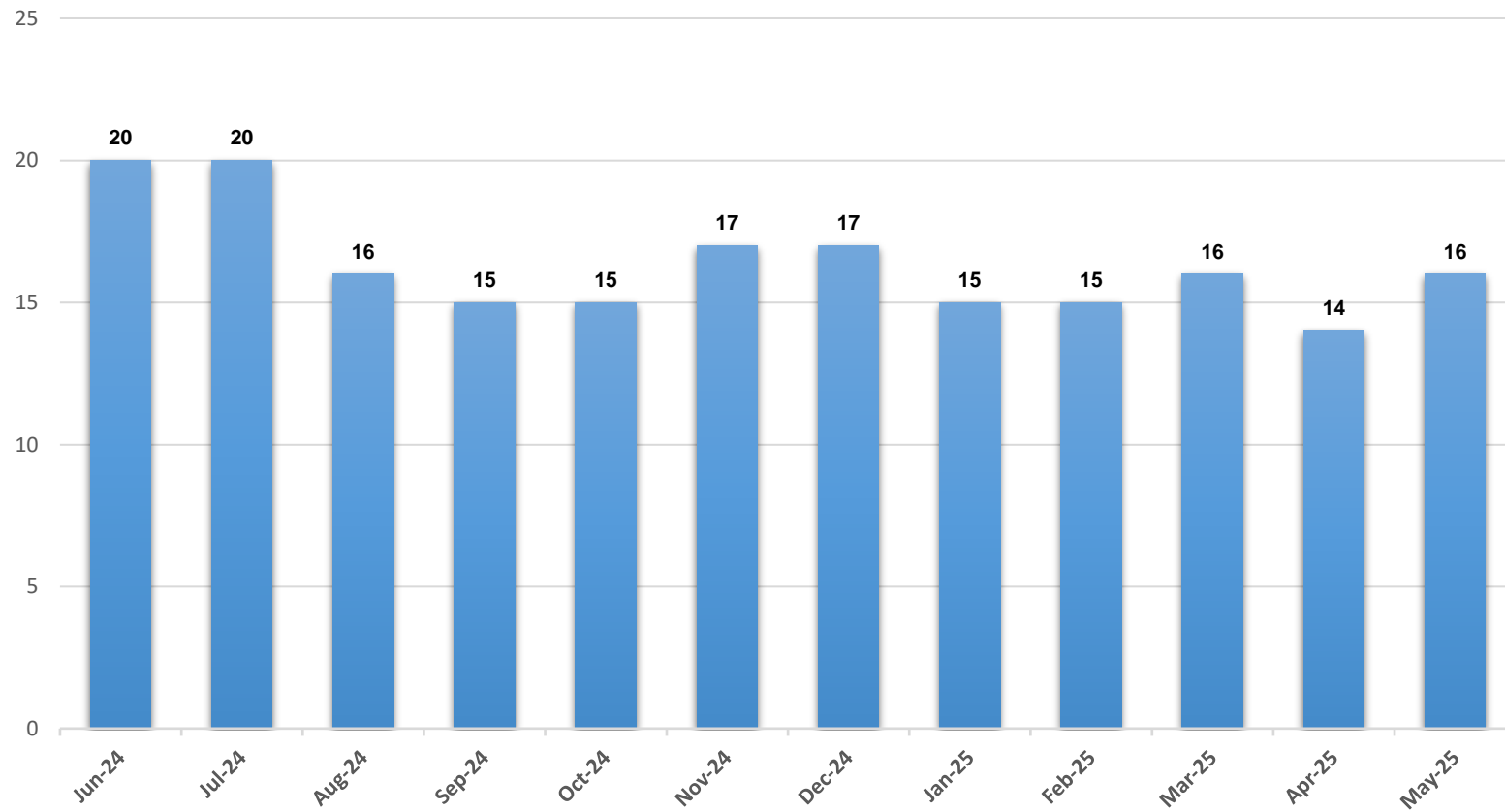
Children Placed in Family-Like Setting, Pulaski (Jacksonville)



***The chart above represents the percentage of children residing in a family-like setting at the end of each month.**

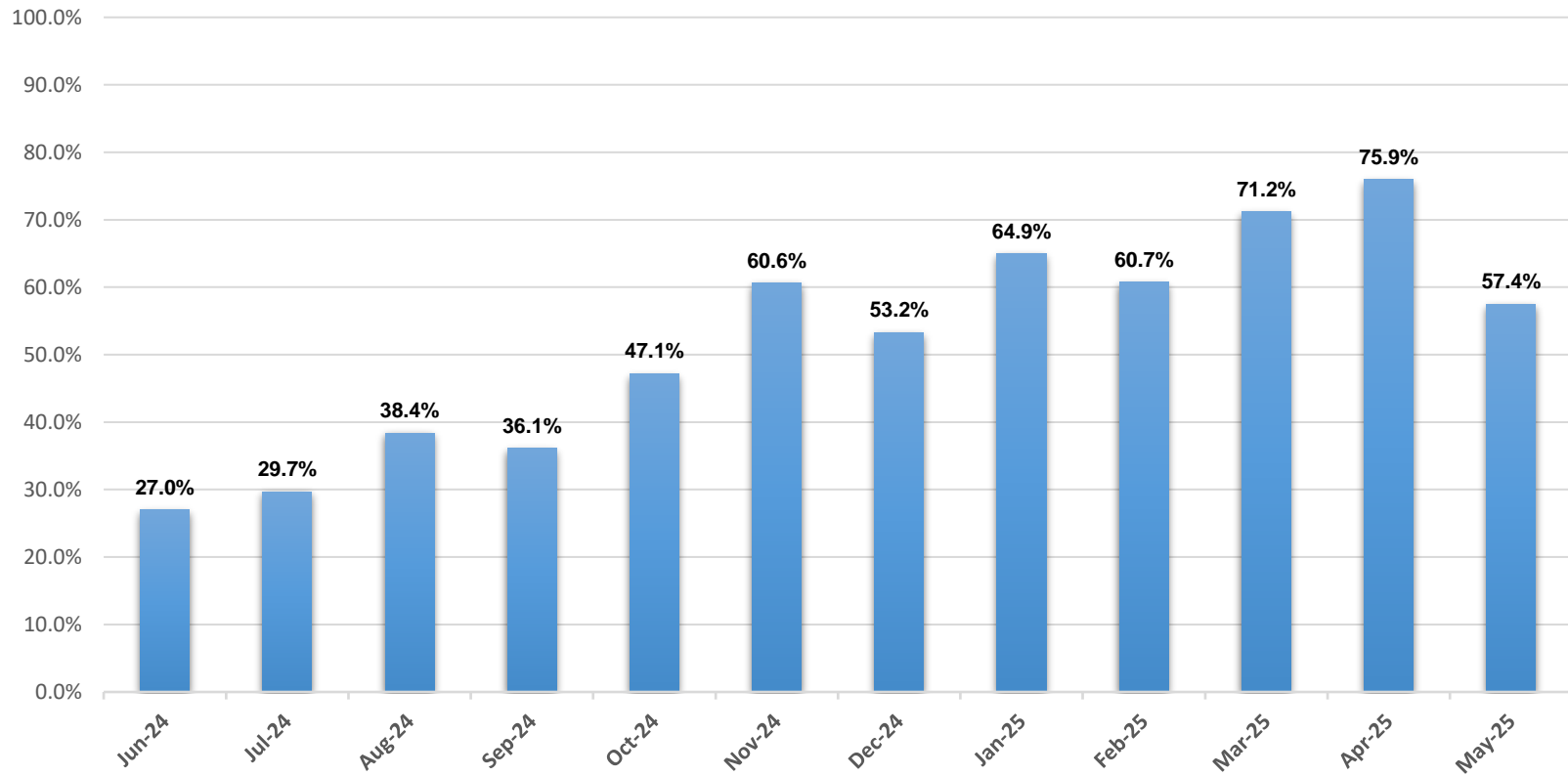
****Family-Like Settings include both family-like homes (e.g., foster family homes, relative placements, pre-adoptive homes, therapeutic foster homes) and family-like residential facilities (i.e., home-like residential settings with live-in house parents).***

Foster Family Homes, Pulaski (Jacksonville)



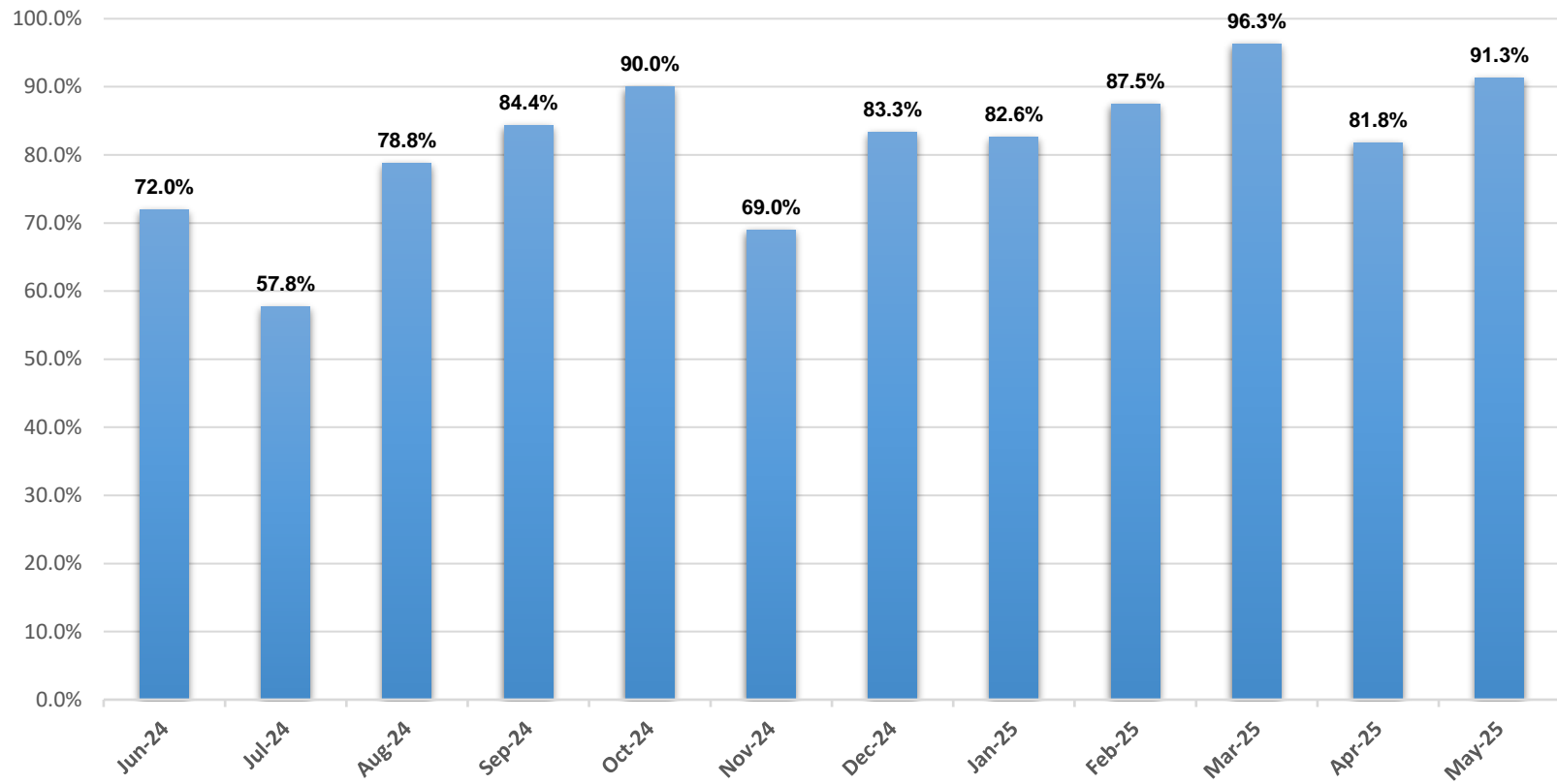
*The chart above represents the number of approved foster homes at the end of each month.

Foster Care Monthly Visits, Pulaski (Jacksonville)



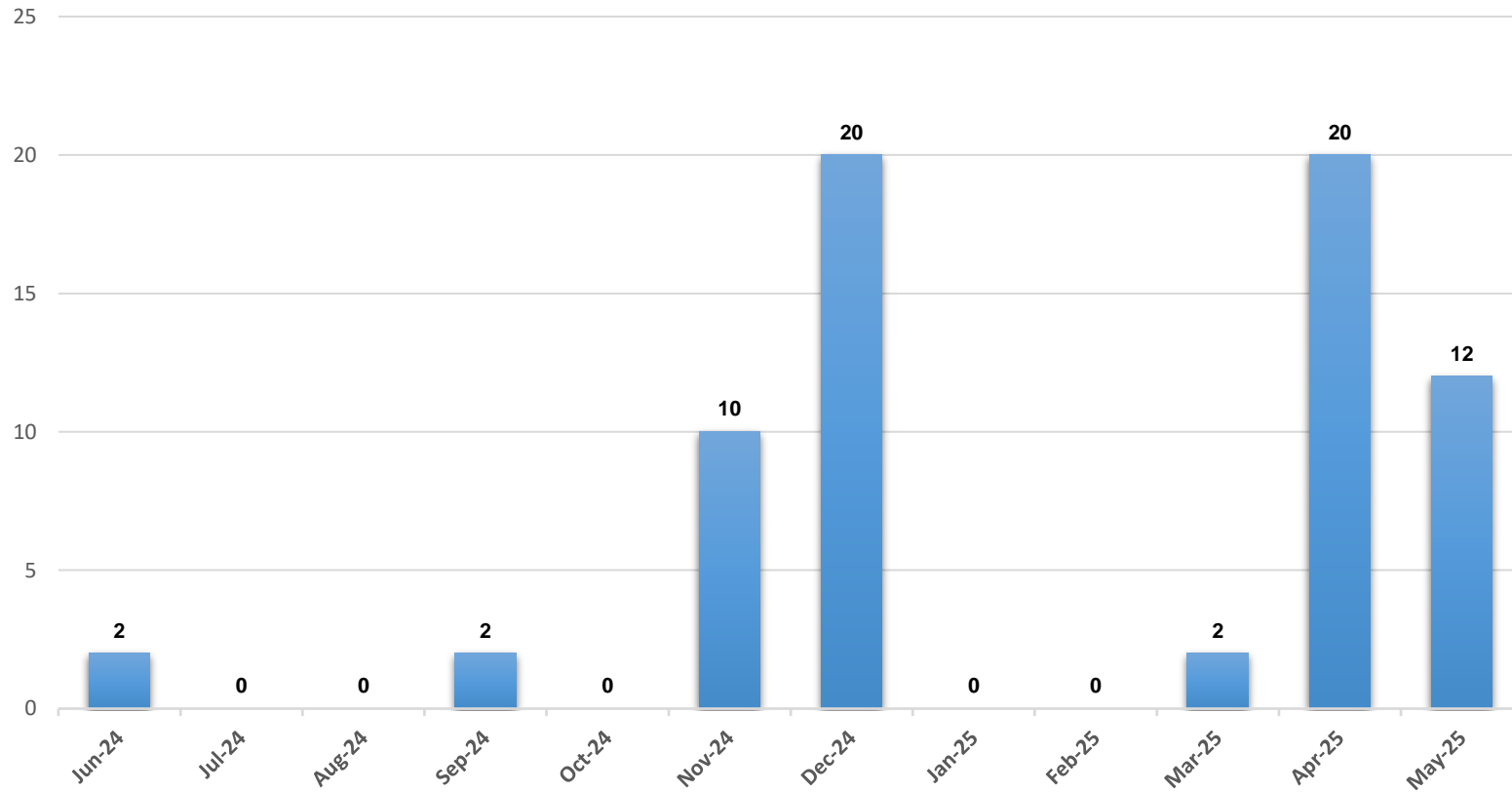
***The chart above represents the percentage of required visits made by family service workers to see children in foster care during the month.**

In-Home Monthly Visits, Pulaski (Jacksonville)



***The chart above represents the percentage of required visits made by family service workers to see in-home families during the month.**

Overdue Investigations, Pulaski (Jacksonville)



***The chart above represents the number of overdue investigations at the end of each month.**

***An investigation that is overdue does not mean that the investigation is being ignored or is not being actively worked; rather, it signifies that the investigation has not yet been fully completed and approved within the required timeframe.**